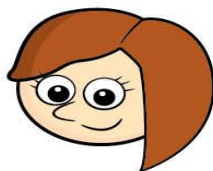


## Make equal groups – sharing

**I** Rosie and Amir are sharing some sweets.



**a)** Draw lines to share the sweets equally.



EYFS children share amounts out practically and talk about what they are doing.



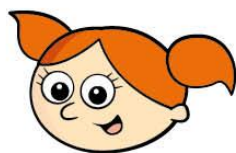
**b)** How many sweets does each child get?

Each child gets

sweets.

8 sweets shared equally between 2 is

**2** Five children share some grapes.



**a)** Draw lines to share the grapes equally.



2

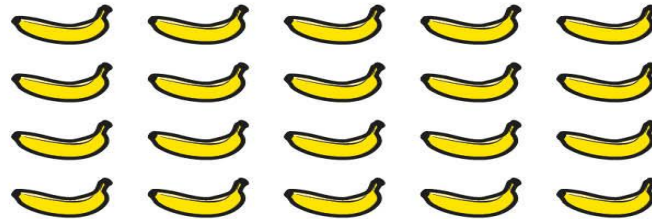
**b)** How many grapes does each child get?

Each child gets  grapes.

10 grapes shared equally between 5 is



- 3 Ron needs to share 20 bananas between 5 boxes.



How many bananas will there be in each box?

20 bananas shared between 5 boxes is

There will be

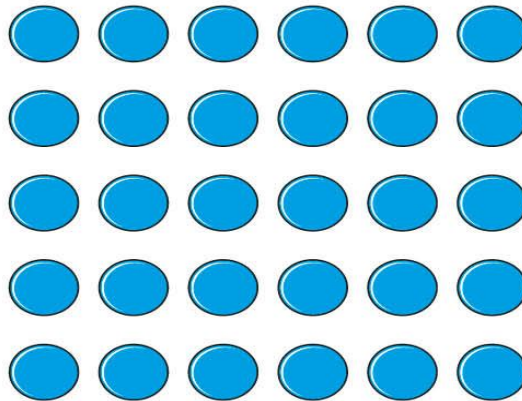
bananas in each box.

EYFS children practically count out any object to 20 and share them into containers. Share them in different ways – in 2's, 5's, 10's.

Year 1



**4** Use 30 counters.



**a)** Share the counters between 2 friends.

How many counters does each friend get?

- 4** b) Share the counters between 5 friends.

How many counters does each friend get?



- c) Share the counters between 10 friends.

How many counters does each friend get?

