



## Session 2

# Toys

**In this session we will be comparing  
old and new  
toys.**

# New Toys

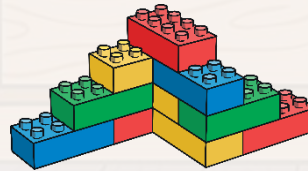
There are lots of different toys in the world. Can you name any?



**doll**



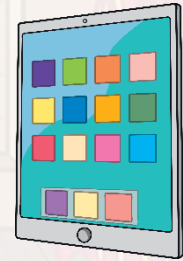
**puppets**



**building  
bricks**



**figures**



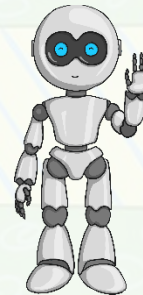
**tablet**



**games  
console**



**cuddly  
toy**



**electronic  
toy**



**bike**



**football**

# Old Toys

Can you name any old toys?



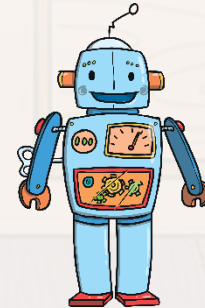
rocking  
horse



ragdoll



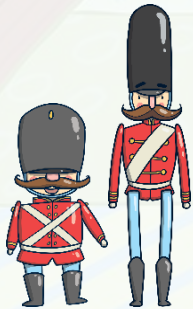
train set



tin robot



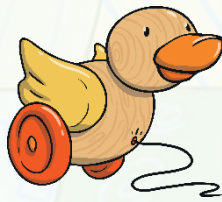
doll's  
house



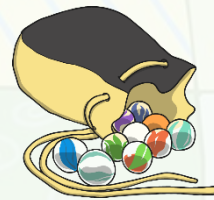
toy  
soldiers



teddy bear



pull-along  
toy



marbles



spinning  
top



roly-poly  
toy

# What Are the Differences?

Old and new toys have lots of differences. Can you think of any?

What are they made from?

How are they made?

How do they move?

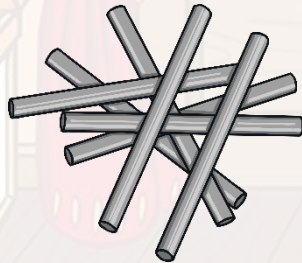


# What Are They Made From?

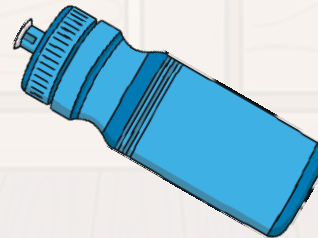
Old and new toys are usually made from different materials.  
Can you name any materials?



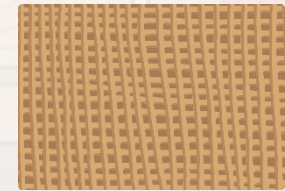
**wood**



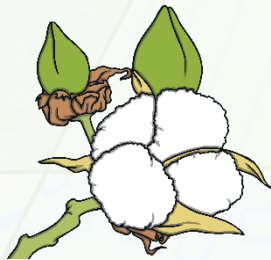
**metal**



**plastic**



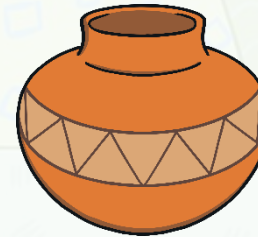
**fabric**



**cotton**



**glass**



**ceramic**

# What Are They Made From?

Old toys were usually made from materials such as wood, metal, glass and fabric.

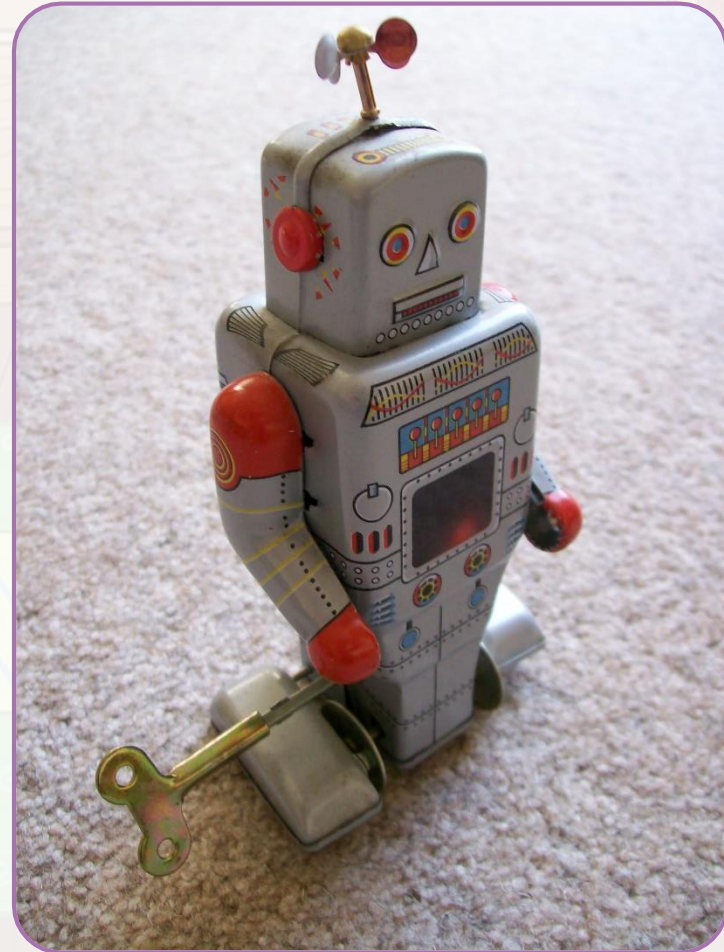


New toys are usually made from plastic.

# How Do They Move?

Lots of old and new toys can move in some way. They may even make sounds.

Many old toys moved by clockwork or 'wind-up'. This was usually a small metal key which attached to the toy and you turned lots of times. This would make small wheels (or gears) inside the toy turn and make the toy move.

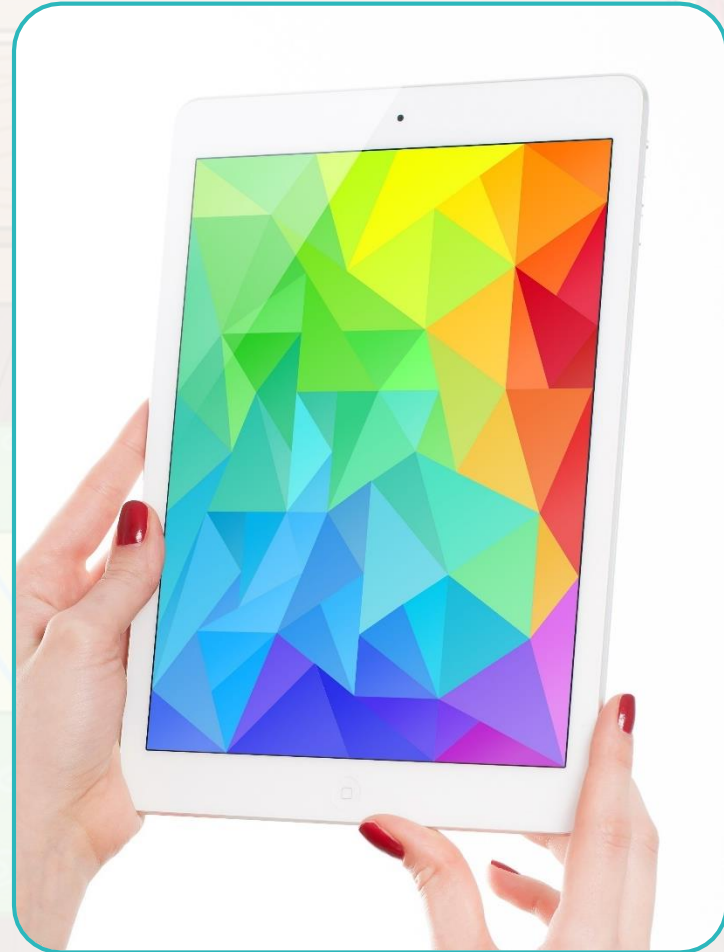


# How Do They Move?

Many new toys use electricity or batteries to move, make noise or light up.

These toys may have lots of different parts, made from lots of different materials.

A tablet computer has a glass screen, a plastic cover and metal parts inside to make the electric parts work.

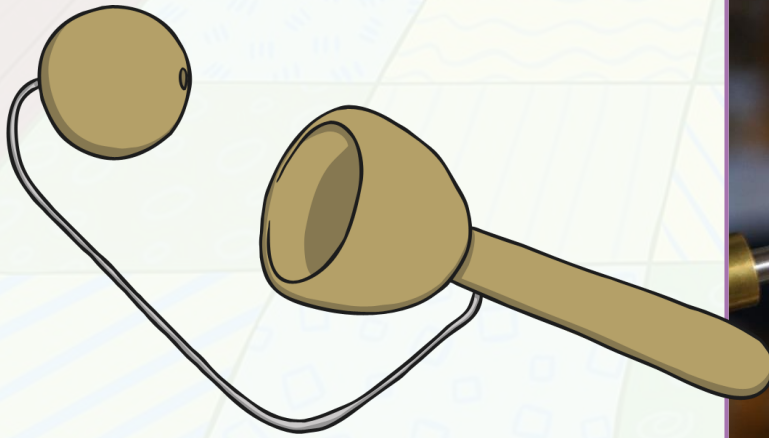




# How Are They Made?

Old toys were made differently to how toys are made today.

Lots of old toys were made from wood. These toys were all handmade. This meant that they took a long time and cost a lot of money to make. It also meant that fewer toys could be made.

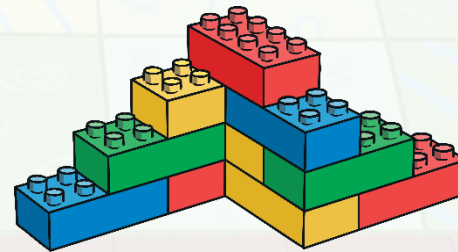
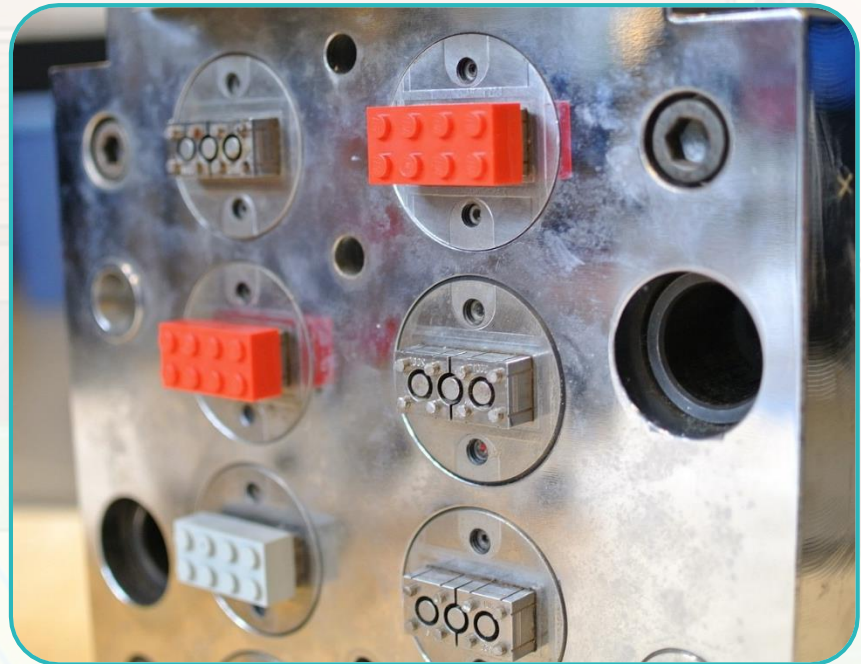


# How Are They Made?

Lots of new toys are made from plastic.

Plastic is much cheaper to use. It can be melted and poured into moulds so lots of toys can be made at the same time. This makes the toys much quicker to make too.

Toys are mostly made by machines in factories now.



# Old or New?

Can you work out which of these toys are old and which ones are new?



# Sorting toys old and new



Here are some pictures of old and new toys. Look carefully at the pictures and decide which are old and which are new.

In your book draw two big circles. Label them old and new then if you can print the pictures cut them out and put them in the right circle. Don't worry if you can't print you can draw and label them instead.

