

Year 1 – Summer Block 3 – Position and Direction

Describe Turns

Introduction

Stand up and face the front of the room. Follow these instructions. Which ones make a full turn?

	Instructions	Full turn?
1	Make a quarter turn. Make a half turn in the same direction. Make another half turn in the same direction.	
2	Make a half turn. Make a quarter turn in the same direction. Make another quarter turn in the same direction.	
3	Make a three quarter turn. Make a half turn in the same direction.	


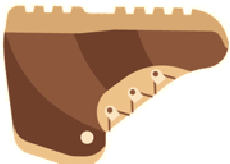


Introduction

Stand up and face the front of the room. Follow these instructions. Which ones make a full turn?

	Instructions	Full turn?
1	Make a quarter turn. Make a half turn in the same direction. Make another half turn in the same direction.	X
2	Make a half turn. Make a quarter turn in the same direction. Make another quarter turn in the same direction.	✓
3	Make a three quarter turn. Make a half turn in the same direction.	X

Varied Fluency 1


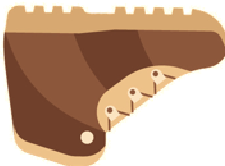


Look at the objects below. How have they moved?

Before	After	Turn
		
		

Write the correct turn for each object.

Varied Fluency 1


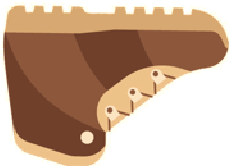


Look at the objects below. How have they moved?

Before	After	Turn
		Half turn
		Quarter turn

Write the correct turn for each object.

Varied Fluency 1

Look at the objects below. How have they moved?

Before	After	Turn
		Half turn
		Quarter turn

The paw print may also make a three-quarter turn to the left.

Write the correct turn for each object.

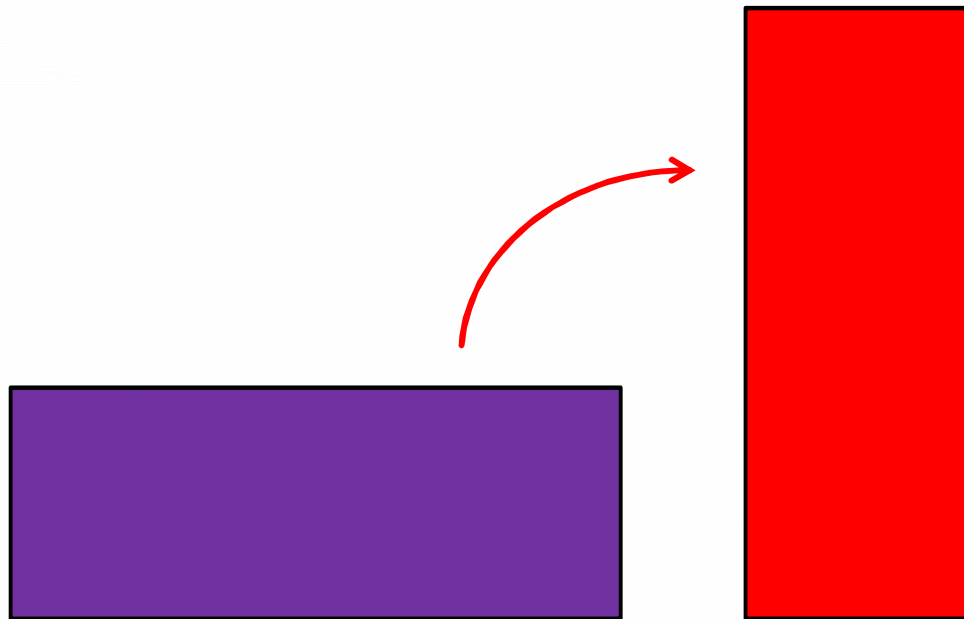
Varied Fluency 2

Draw this shape after a quarter turn.



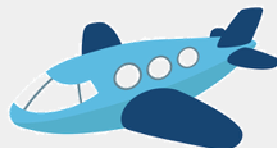
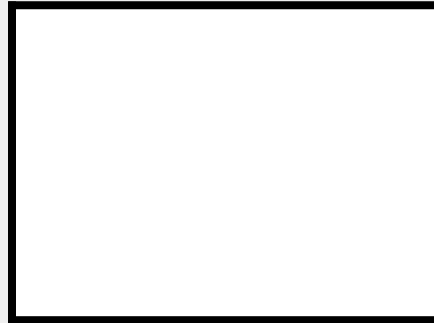
Varied Fluency 2

Draw this shape after a quarter turn.



Varied Fluency 3

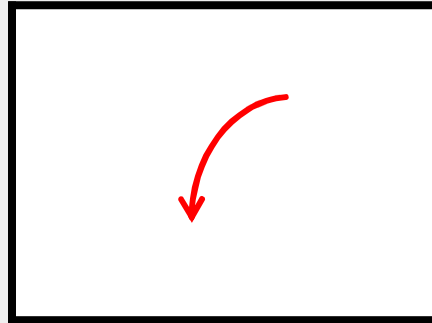
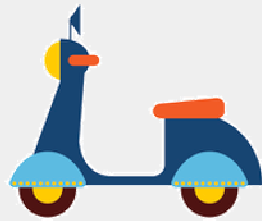
Draw an arrow in the box to show the direction each object has turned.



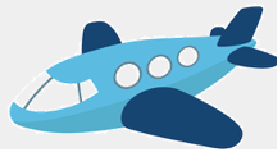
Describe the turn each object has made.

Varied Fluency 3

Draw an arrow in the box to show the direction each object has turned.



A quarter turn

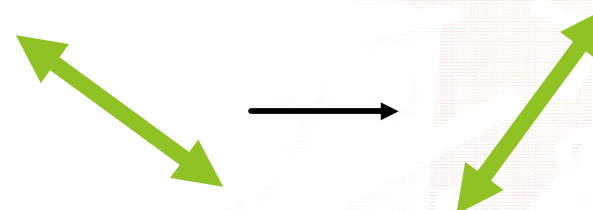
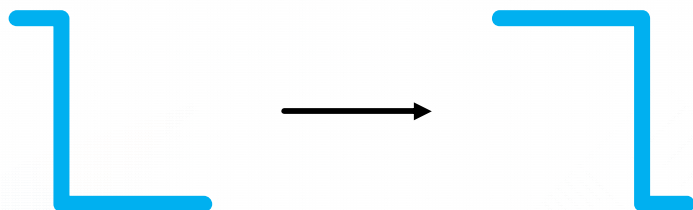
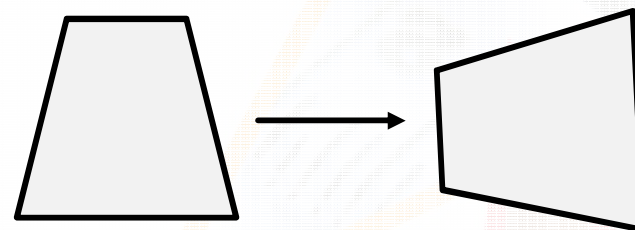
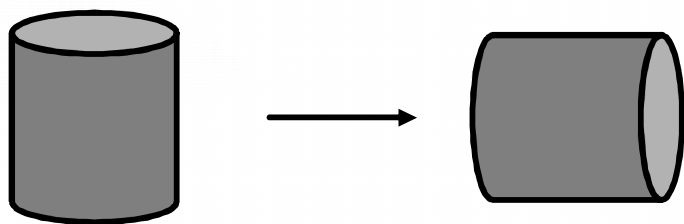


A quarter turn

Describe the turn each object has made.

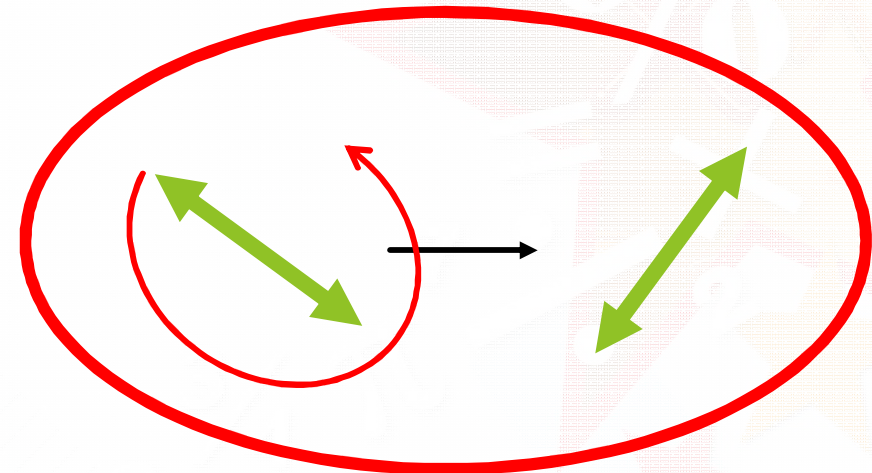
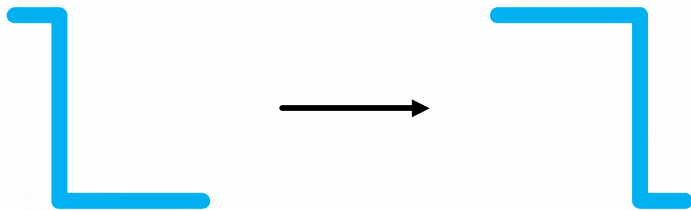
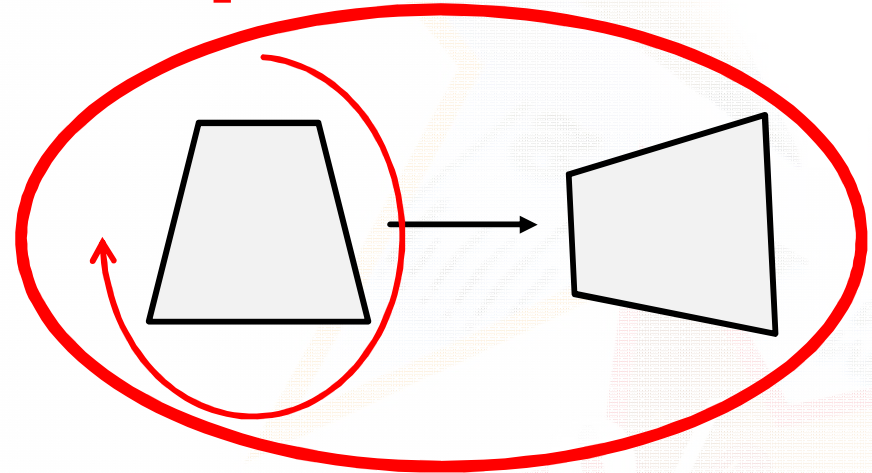
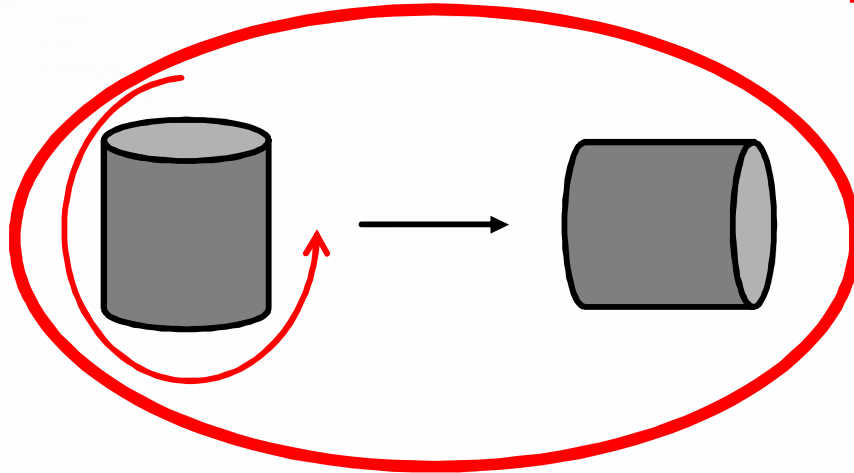
Varied Fluency 4

Circle the shapes which have made a 3 quarter turn.



Varied Fluency 4

Circle the shapes which have made a 3 quarter turn.
Think about which way the shapes could turn.



Problem Solving 1

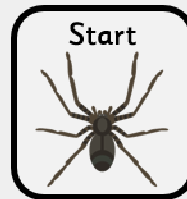
Joseph has turned his game piece twice, in the same direction.



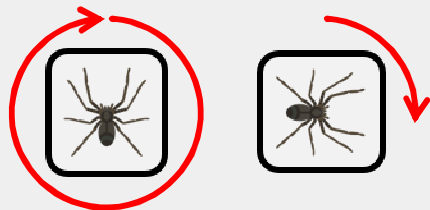
Which two turns could leave him facing this way?

Problem Solving 1

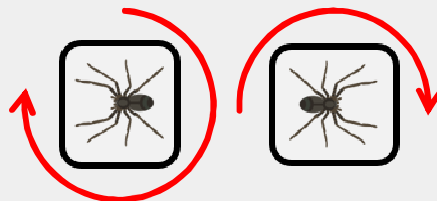
Joseph has turned his game piece twice, in the same direction.



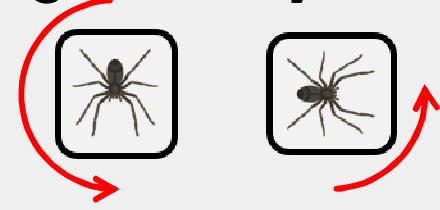
Which two turns could leave him facing this way?



One full turn and
one quarter turn



One three quarter
turn and one half
turn



One half turn and
one quarter turn

Problem Solving 2

The jigsaw pieces need to turn to fit their space.

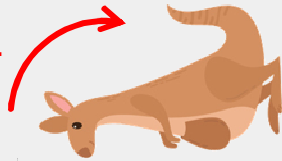


How should they each turn?

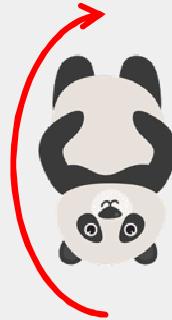
Problem Solving 2

The jigsaw pieces need to turn to fit their space.

a quarter turn



a half turn



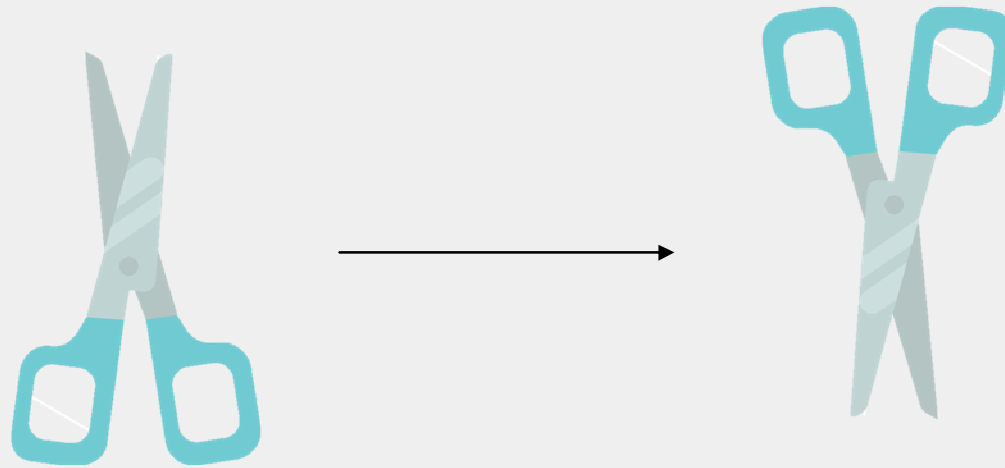
a quarter turn



How should they each turn?

Reasoning 1

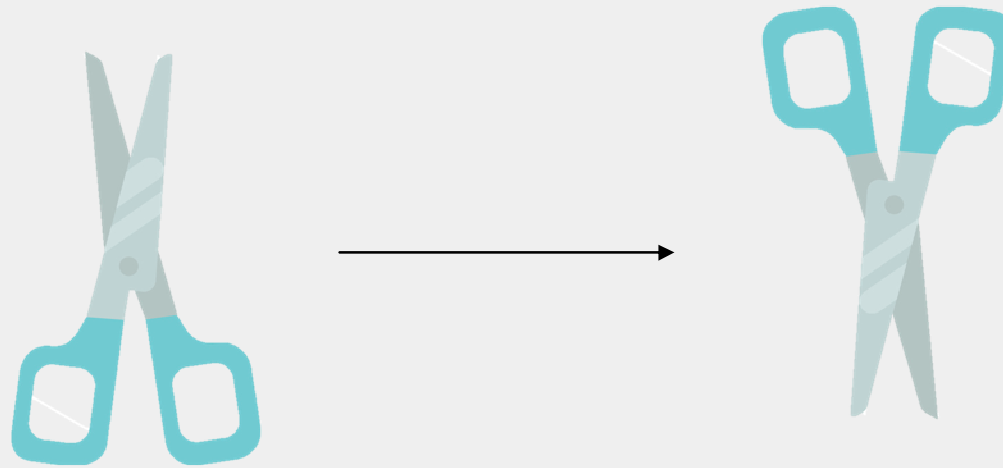
Emily was asked to turn the scissors one quarter turn and one half turn.



Did she follow the instructions? Explain and correct any mistakes you find.

Reasoning 1

Emily was asked to turn the scissors one quarter turn and one half turn.

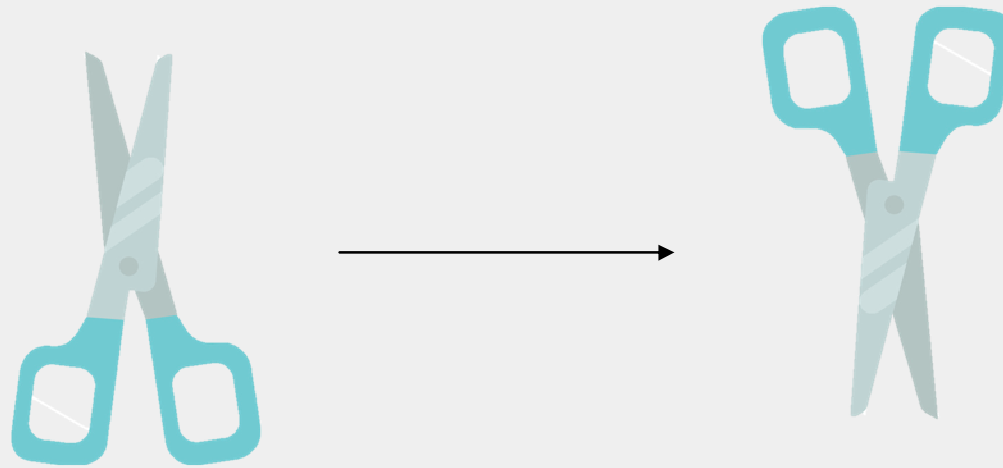


Did she follow the instructions? Explain and correct any mistakes you find.

Emily has not followed the instructions...

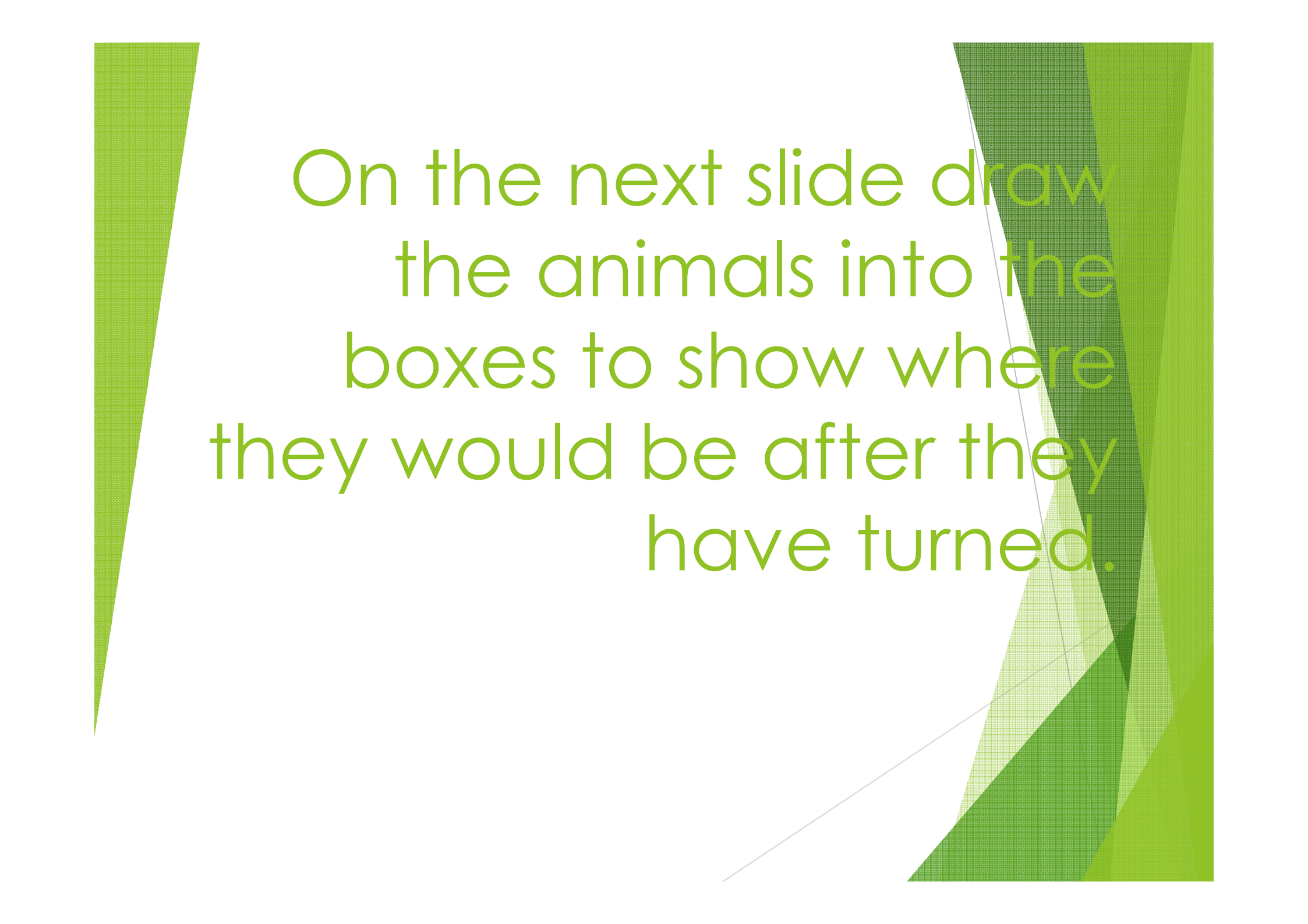
Reasoning 1

Emily was asked to turn the scissors one quarter turn and one half turn.



Did she follow the instructions? Explain and correct any mistakes you find.






Emily has not followed the instructions. She turned the scissors one half turn. She needs to turn them one quarter turn more.

The background of the slide features abstract, overlapping green geometric shapes. On the left, a solid green triangle points downwards. On the right, a series of overlapping green shapes, including triangles and trapezoids, create a layered effect. A thin, light gray line extends from the bottom left towards the center of the slide.

On the next slide draw
the animals into the
boxes to show where
they would be after they
have turned.

Animals Turning Clockwise

Cut and paste the animals at the different turning points.

Start position	One-quarter turn clockwise	Half turn clockwise	Three-quarter turn clockwise	Full turn clockwise
				
				
				
				
				

Animals Turning Anticlockwise

Cut and paste the animals at the different turning points.

Start position	One-quarter turn anticlockwise	Half turn anticlockwise	Three-quarter turn anticlockwise	Full turn anticlockwise
