

Dear Parents/Carers,
This powerpoint takes the children through the learning sequence. If possible please talk through the slides with your child and check their understanding. The slides start at a basic level to re-cap previous learning.

Time

30.4.20

30.4.20

LO: I can compare durations of time



Starter

Order these activities from the shortest length of time to the longest.

brush your teeth

a day at school

travel to school

watch a film

lunch time

a family holiday

Write the answers in your book.

Starter - answer

Order these activities from the shortest length of time to the longest.

shortest

brush your teeth

travel to school

lunch time

watch a film

a day at school

longest

a family holiday

Descriptive Teaching

True or false?

25 minutes is less than half an hour.

50 minutes is more than an hour.

An hour and a quarter is 75 minutes.

Tell an adult the answers.

Descriptive Teaching - Answer

True or false?

25 minutes is less than half an hour. True

50 minutes is more than an hour. False

An hour and a quarter is 75 minutes. True

Descriptive Doing

Use $<$, $>$ or $=$ to complete the statements.

**three quarters
of an hour**

45 minutes

half an hour

25 minutes

Write the
statements in your
book.

Descriptive Doing - Answer

Use $<$, $>$ or $=$ to complete the statements.

three quarters
of an hour

$=$

45 minutes

half an hour

$>$

25 minutes

Reflective Teaching

Which is the longest duration of time?

03:40



04:25

16:45



17:20

Use a clock to help
you find the answer.
Write the correct
answer in your book.

Reflective Teaching - Answers

Which is the longest duration of time?

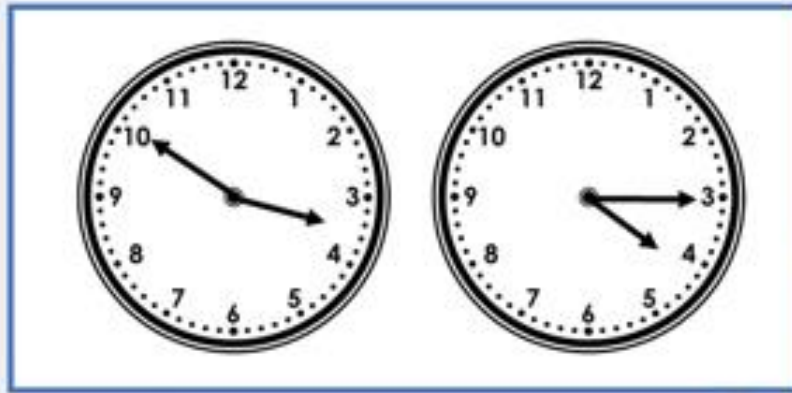
The diagram illustrates two time intervals. The first interval, highlighted in red, starts at 03:40 and ends at 04:25, with a red arrow indicating the duration. The second interval, shown in grey, starts at 16:45 and ends at 17:20, with a grey arrow indicating the duration.

Start Time	End Time	Duration
03:40	04:25	45 minutes
16:45	17:20	35 minutes

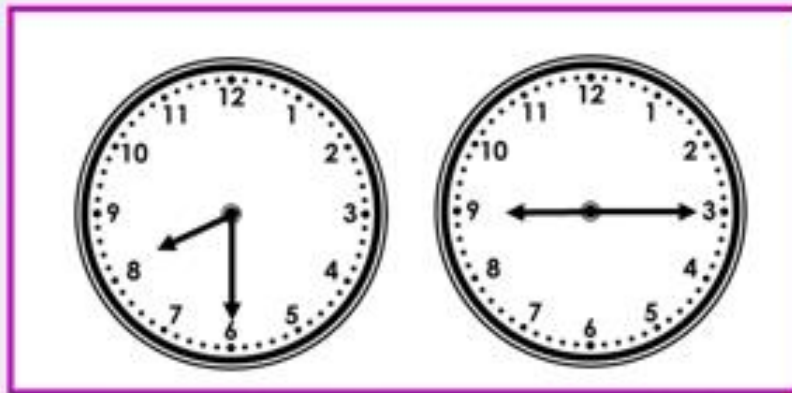
Reflective Doing

Which is the shortest duration of time?

A



B



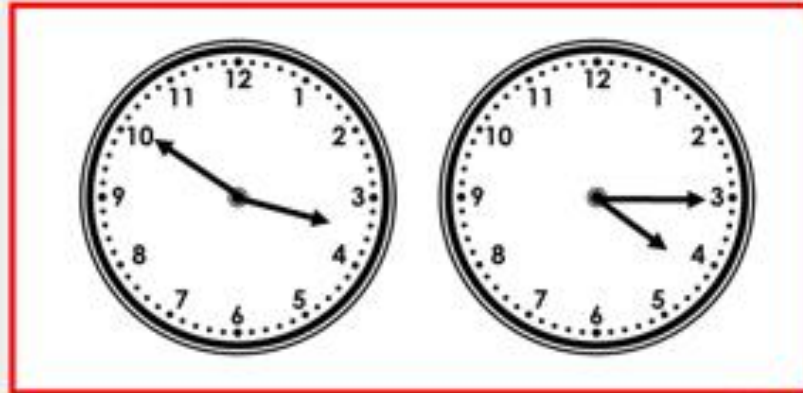
What are the times on each of the clocks? Work out the duration between the times.

Write the correct answer in your book.

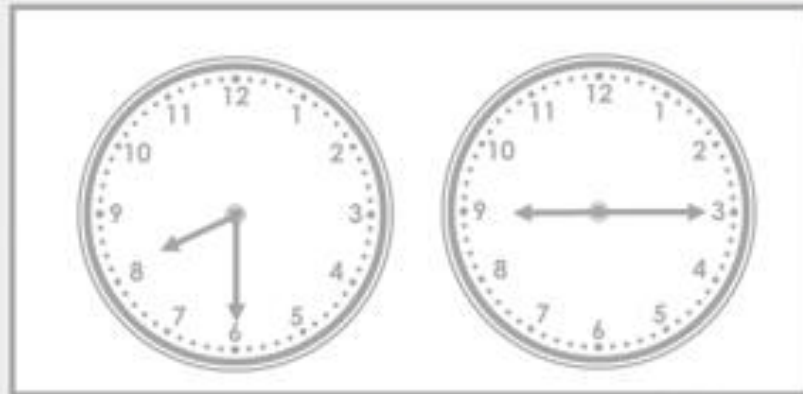
Reflective Doing - Answers

Which is the shortest duration of time?

A



B



Independent work

The following slides are questions for you to work through independently.

There are 3 sets of work - 1 chili (the easiest), 2 chilies, 3 chilies (the hardest). Choose one set you feel most comfortable with.

Independent work



1a. Which is the longest duration of time?

A



B



3 VF

1b. Which is the shortest duration of time?

A

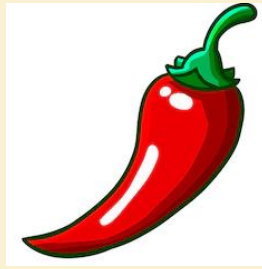


B



3 VF

Independent work



2a. Which is the shortest duration of time?

A



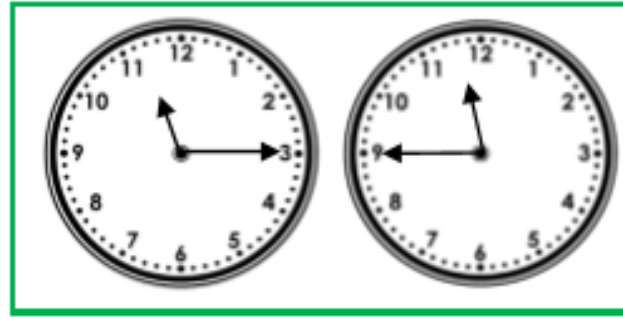
B



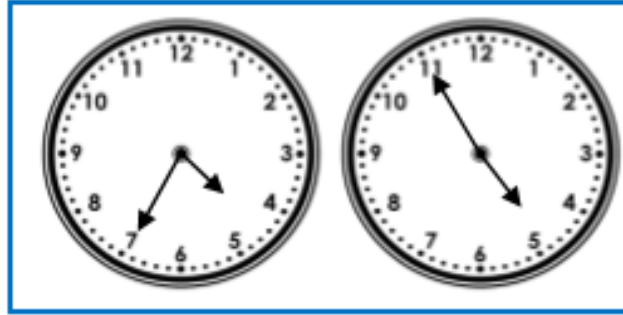
S VF

2b. Which is the longest duration of time?

A

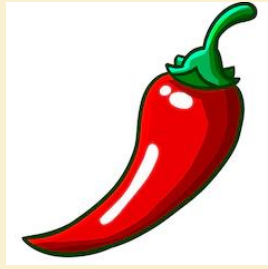


B



S VF

Independent work



3a. How long is bus journey A?
How long is bus journey B?

Bus	Pellon	Warley
A	08:35	08:55
B	09:15	09:40



S VF

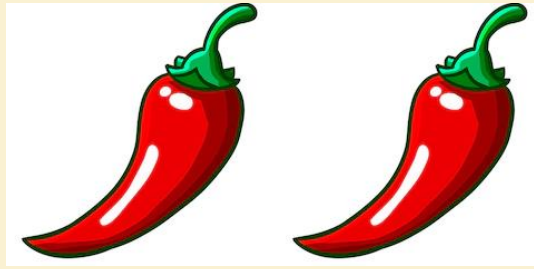
3b. How long is train journey 1?
How long is train journey 2?

Train	Bradford	New Pudsey
1	15:10	15:40
2	15:20	15:55



S VF

Independent work



4a. Which is the longest duration of time?

A

07:40



08:05

B

09:35



10:20



S VF

4b. Which is the shortest duration of time?

A

12:40



13:15

B

2:25

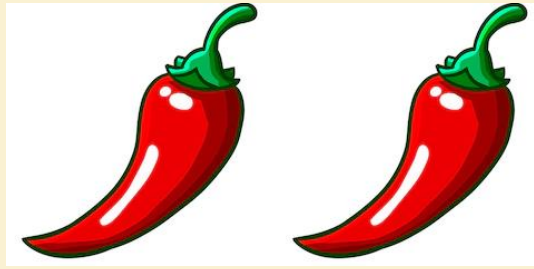


3:10



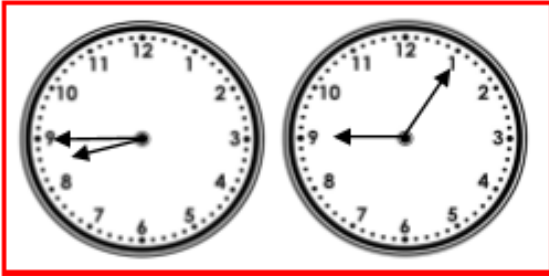
S VF

Independent work

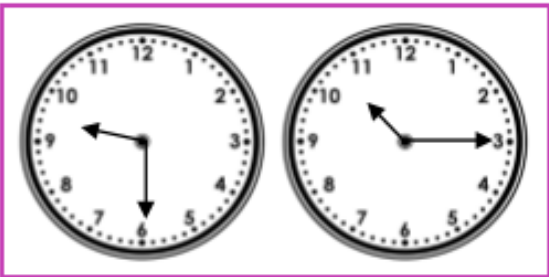


5a. Which is the shortest duration of time?

A



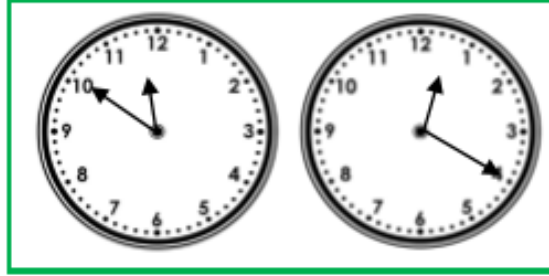
B



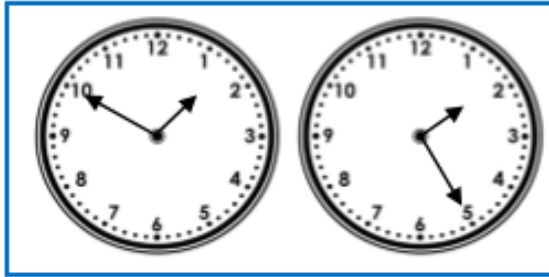
S VF

5b. Which is the longest duration of time?

A

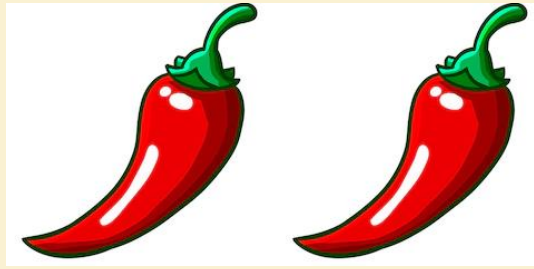


B



S VF

Independent work



6a. How much longer does train B take than train A?

Train	Leeds	Halifax
A	12:35	13:10
B	13:40	14:25



S VF

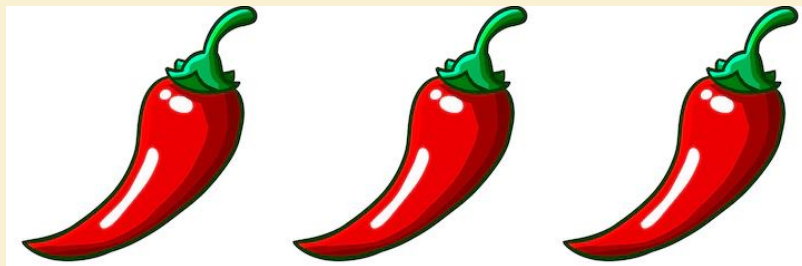
6b. How much quicker is bus 1 than bus 2?

Bus	Hebden Bridge	Sowerby Bridge
1	09:35	10:05
2	11:55	12:30



S VF

Independent work



7a. Which is the longest duration of time?

A

02:13



03:06

B

08:31



09:02



3 VF

7b. Which is the shortest duration of time?

A

16:48



17:35

B

18:32

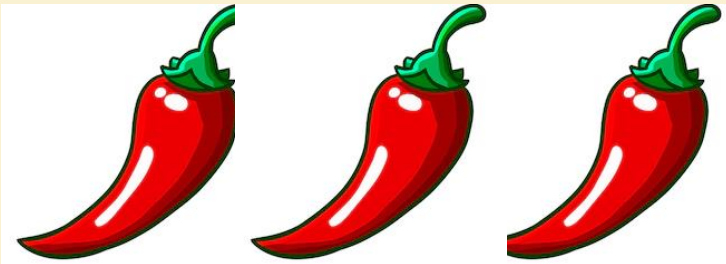


19:26



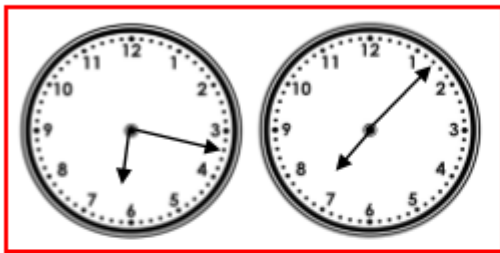
3 VF

Independent work

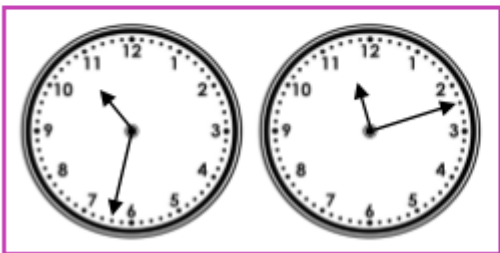


8a. Which is the shortest duration of time?

A



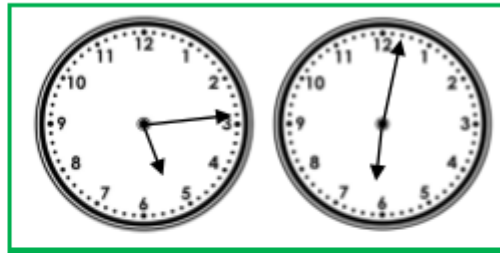
B



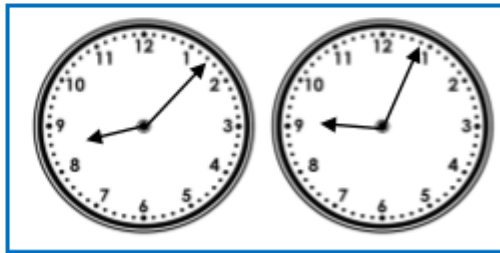
S VF

8b. Which is the longest duration of time?

A



B



S VF

Independent work



9a. How much longer does bus 2 take than bus 1?

Bus	Preston	Oldham
1	10:28	11:13
2	17:18	18:06



S VF

9b. How much quicker is train B than train A?

Train	High street	Upper Town
A	07:56	08:46
B	09:44	10:32



S VF

Answers

Developing

1a. **A**

2a. **A**

3a. **A = 20 minutes, B = 25 minutes**

Expected

4a. **B**

5a. **A**

6a. **10 minutes**

Greater Depth

7a. **A**

8a. **B**

9a. **3 minutes**

Developing

1b. **B**

2b. **A**

3b. **1 = 30 minutes, 2 = 35 minutes**

Expected

4b. **A**

5b. **B**

6b. **5 minutes**

Greater Depth

7b. **A**

8b. **B**

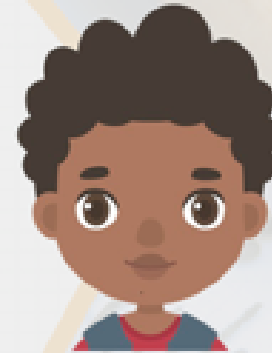
9b. **2 minutes**

Reflection Time

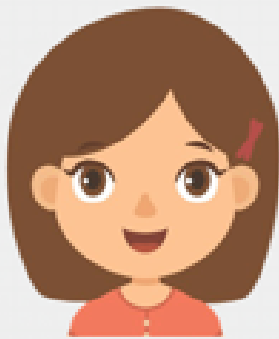


Who is correct? Explain how you know.

I left school at twenty-five minutes to four and arrived home at twenty minutes past four. It took me longer to get home.



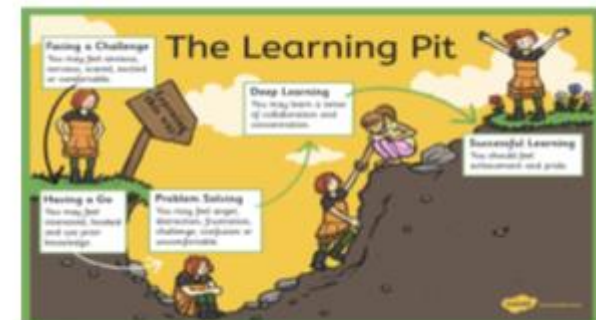
Mo



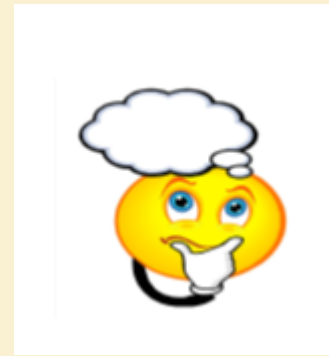
Katie

I left school at half past three and arrived home at twenty minutes past four. It took me longer to get home.

Take time
to reflect



Reflection Time - Answers



Who is correct? Explain how you know.

I left school at twenty-five minutes to four and arrived home at twenty minutes past four. It took me longer to get home.



Mo



Katie

I left school at half past three and arrived home at twenty minutes past four. It took me longer to get home.

Katie is correct because it took her 50 minutes to get home from school, while it took Mo 45 minutes.

Take time
to reflect

