



Changing Landscapes

How Has the UK Changed?

Look at the two images. How has the location changed?



Chesterfield, 1979



Chesterfield, 2015

Photo courtesy of Alan Heardman (@geograph.org.uk) - granted under creative commons licence – attribution

Look at the two images.
How has the location changed?



Medway, 1958



Medway, 2015

Photo courtesy of Martin Coull (@geograph.org.uk) - granted under creative commons licence – attribution

Look at the two images. How has the location changed?

Taunton, 1918



Taunton, 2015



Photo courtesy of unknown (@geograph.org.uk) - granted under creative commons licence – attribution

Look at the two images. How has the location changed?



Robin Hood's Bay, 1958



Robin Hood's Bay, 2015

Photo courtesy of Gerald England (@geograph.org.uk) and Padawan Stuart (@flickr.com) - granted under creative commons licence – attribution

Finding the Past

- Use <http://www.geograph.org.uk/> (use the Geograph website guidance for support).
- Look at “This day in the past”.
- Choose an old street scene.
- Copy and paste the image into a word document, print or take a photo of the image.



Finding the Present

- Use www.google.co.uk/maps
- Enter the address you are searching for.
- Drag the little yellow man onto the street.
- Click to navigate along the street until you find the scene you are looking for.
- Use a screen snipping tool to copy and paste the image into your software, print or take a photo of the image.

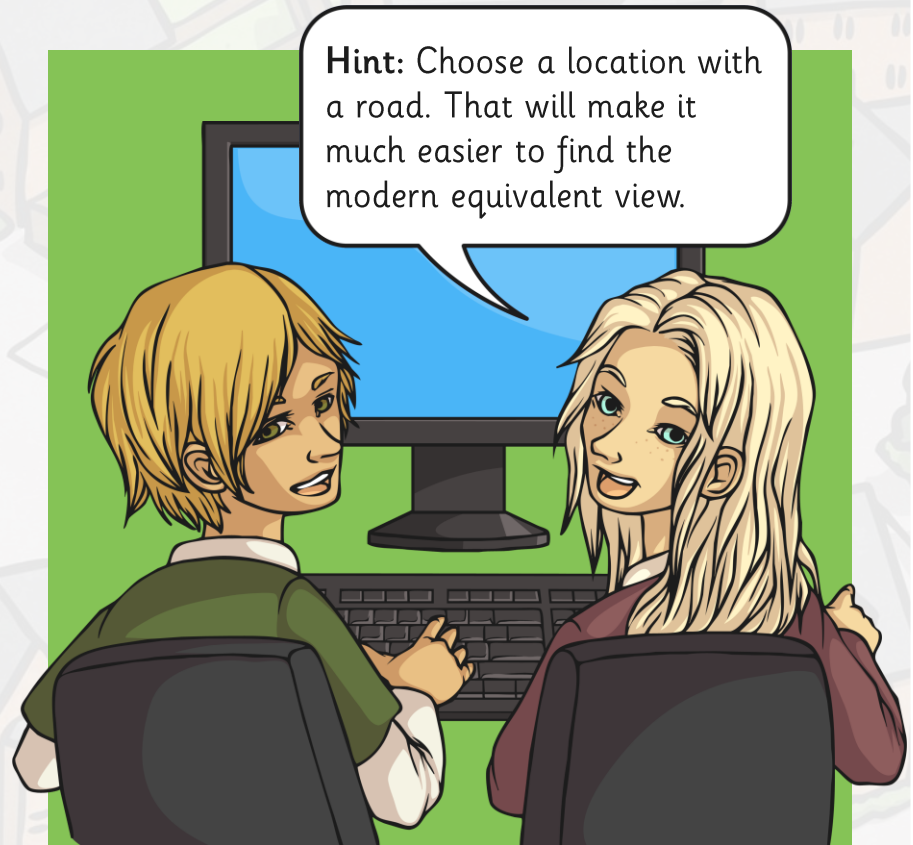
Past and Present

1

Use www.geograph.org.uk to find an old image of a location.

2

Now, use www.google.co.uk/maps to find the modern Street View of the same location.



Hint: Choose a location with a road. That will make it much easier to find the modern equivalent view.

Why Do Places Stay the Same?



Tower Bridge 1956



Tower Bridge 2015

Why do you think this view hasn't changed?

Tower Bridge is a Grade I Listed – it is a building of exceptional interest.

Photo courtesy of Dr Neil Clifton and Chriss Gunns (@geograph.org.uk) - granted under creative commons licence – attribution

Why Do Places Stay the Same?

Buildings

- Grade I Listed - buildings of exceptional interest
- Grade II* Listed – buildings of particular interest
- Grade II Listed - buildings that are of special interest
- Scheduled monument
- Local councils can designate parts of cities, towns and villages “Conservation Areas”

Other

- Area of archaeological importance
- World Heritage site
- Regionally important geological site

Landscapes

- Area of Outstanding Natural Beauty
- National Park
- Country park
- Nature reserve
- Green belt

Habitats

- Marine Protection Area
- Site of Special Scientific Interest
- Special Area of Conservation
- Special Area of Protection
- Tree Preservation Order