



Features of Coastlines

Types of Weathering

**Physical
Weathering**

**Chemical
Weathering**

**Biological
Weathering**

Acidic rainwater falls onto rocks such as limestone. Over time it will dissolve some of the rock.

Roots from trees and other plants may grow into or under rocks with such force that they can cause damage or even split the rock in two!

Rainwater collects in a crack in the rock. It freezes and forces the crack to widen. This freeze-thaw cycles repeats.



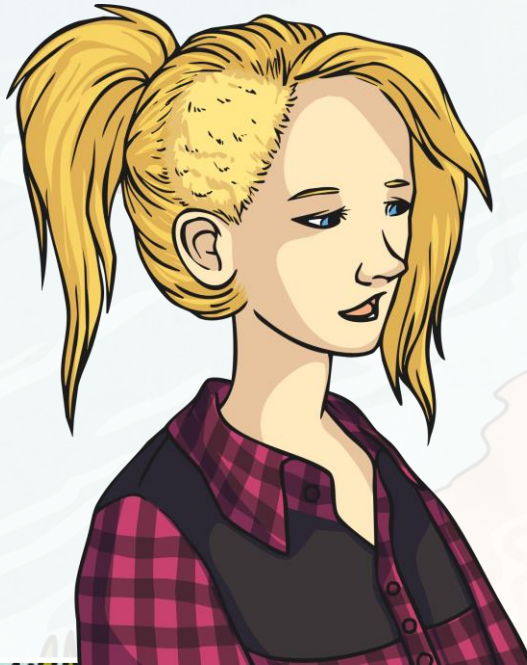
What Is a Coastline?

What is the definition of a coastline?

What would you expect to see at the coast?

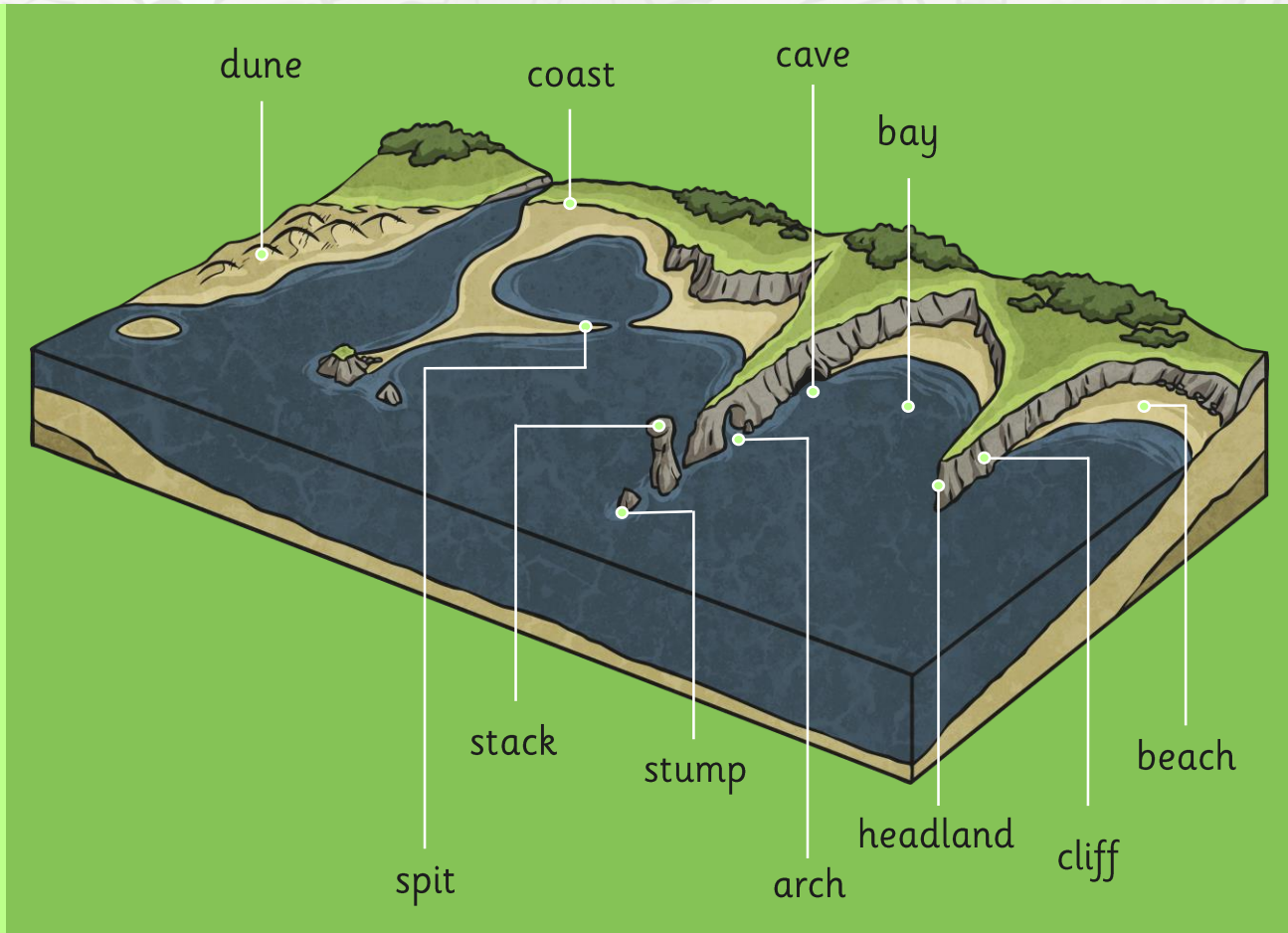
What sorts of activities happen there?
Human Geography

What natural features might you see?
Physical Geography



Features of Coastlines

coast
bay
headland
beach
dune
cave
cliff
arch
stack
stump
spit



Features of Coastlines

Bay and Headland

If a coastline is made of sections of harder and softer rock, these will erode at different speeds when attacked by waves.

Where the softer rock has eroded more quickly, bays form.

The harder rock erodes more slowly, and forms headlands surrounding bays.



Features of Coastlines

Watch this video to see how beaches form.

<https://www.bbc.co.uk/bitesize/clips/zc2pvcw>



Features of Coastlines

Watch this video about caves, cliffs, arches, stacks and stumps.

<https://www.bbc.co.uk/bitesize/clips/zccd2hv>



crack

cave

larger cave

arch

stack

stump

Features of Coastlines

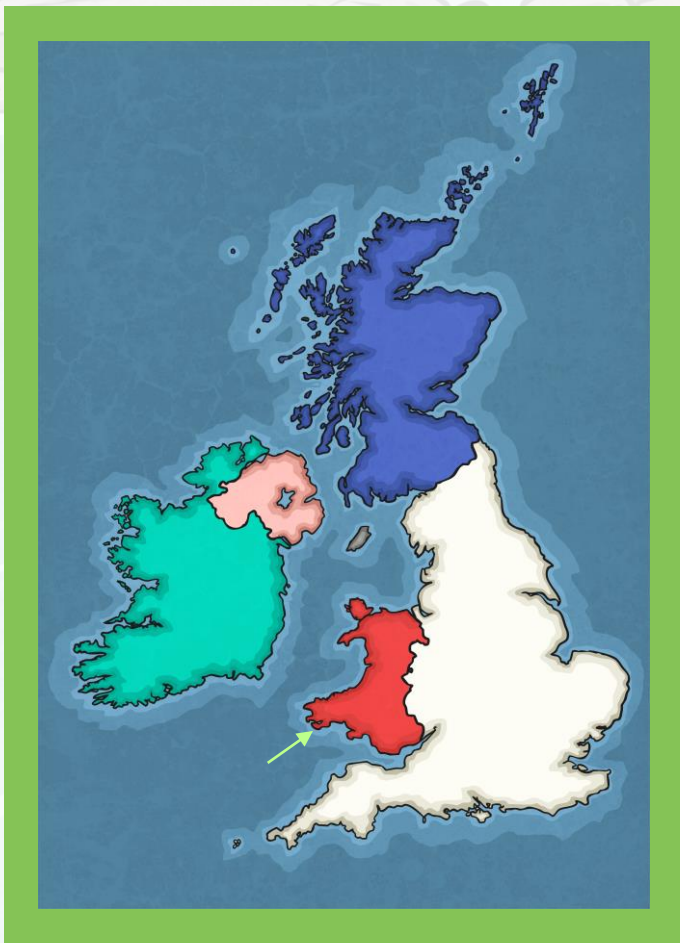
Spit

A spit is formed by deposition.

1. The tide carries eroded material along the coastline coast
2. The deposits form a long, thin sandy area of land.
3. Changing winds may cause the spit to form a hook shape.
4. Mud flats develop on the inland side of the spit.



The UK Coast



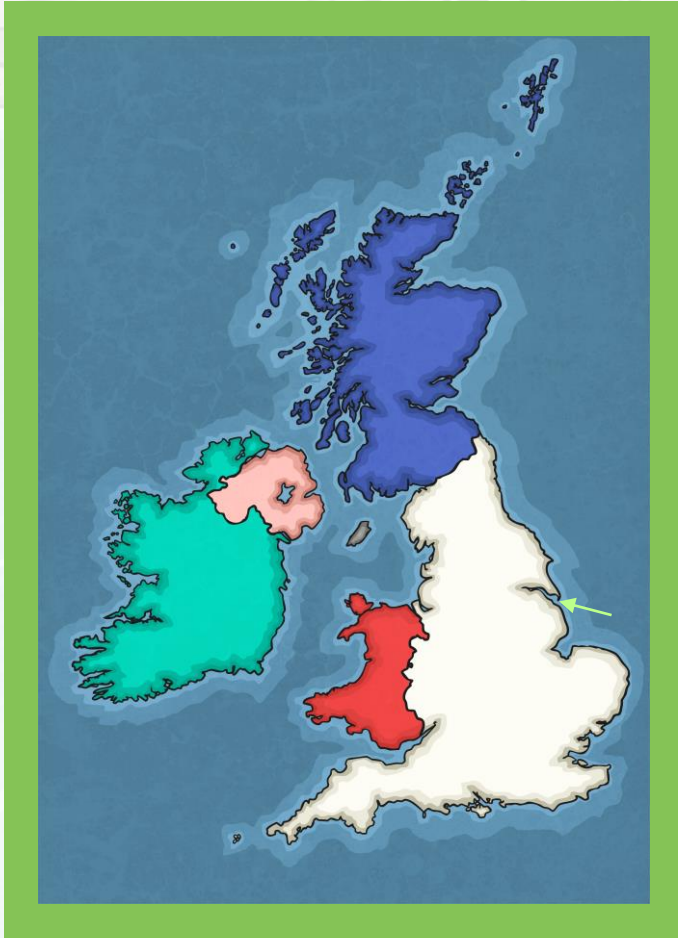
Stack Rocks, Wales

- What features are shown?
- Where do you think they are found?
- Are they caused by erosion or deposition?



Photo courtesy of Capt' Gorgeous (@flickr.com) - granted under creative commons licence - attribution

The UK Coast



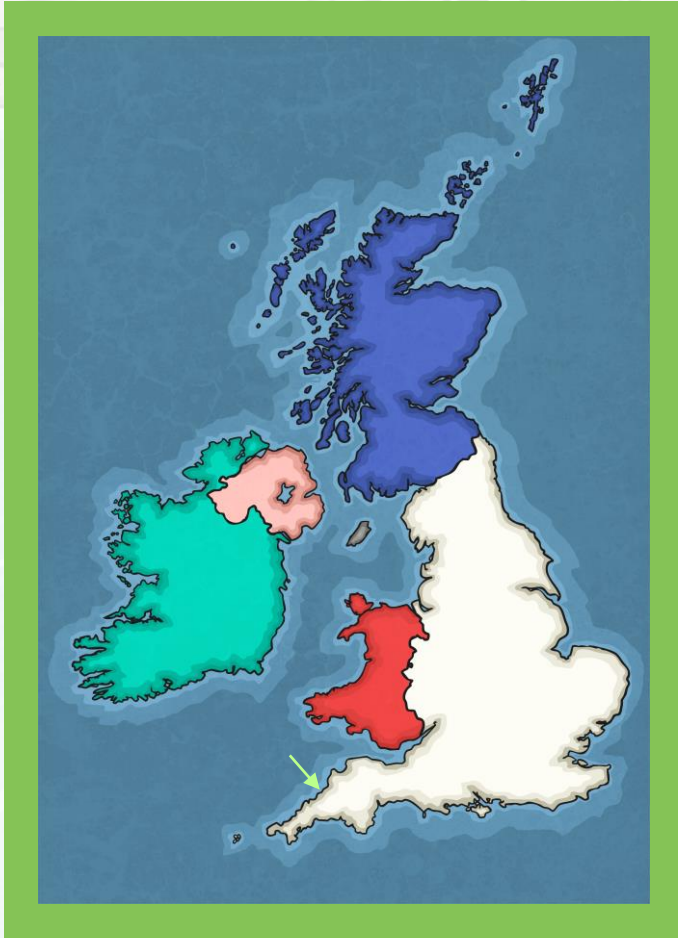
Spurn Head, East Yorkshire

- What features are shown?
- Where do you think they are found?
- Are they caused by erosion or deposition?



Photo courtesy of leondz (@flickr.com) - granted under creative commons licence - attribution

The UK Coast



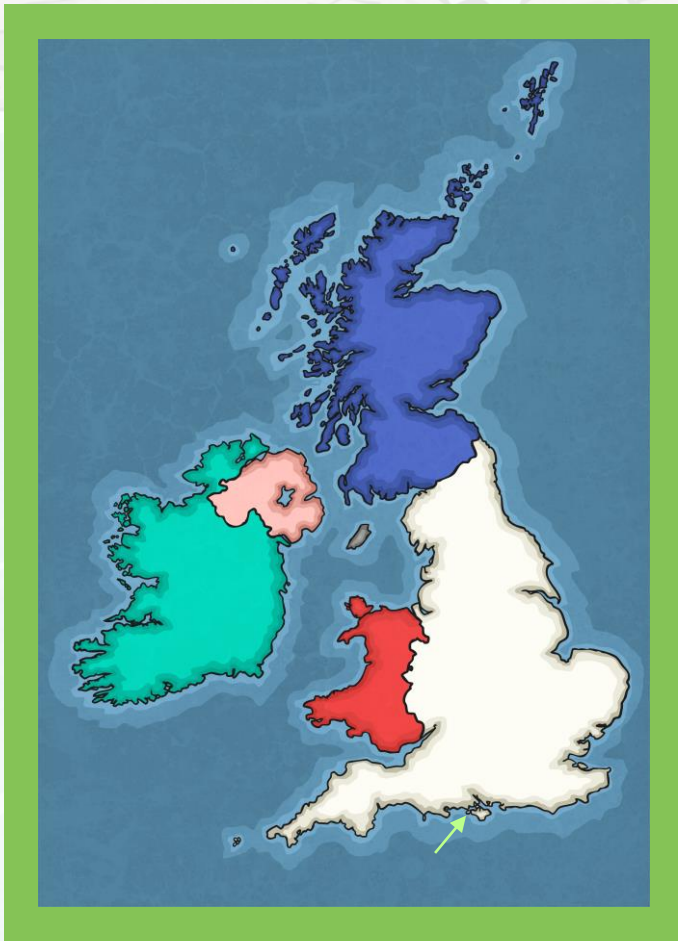
Caves at Tintagel, Cornwall

- What features are shown?
- Where do you think they are found?
- Are they caused by erosion or deposition?



Photo courtesy of andy (@geograph.org.uk) - granted under creative commons licence - attribution

The UK Coast



The Needles (Stacks), Isle of Wight

- What features are shown?
- Where do you think they are found?
- Are they caused by erosion or deposition?

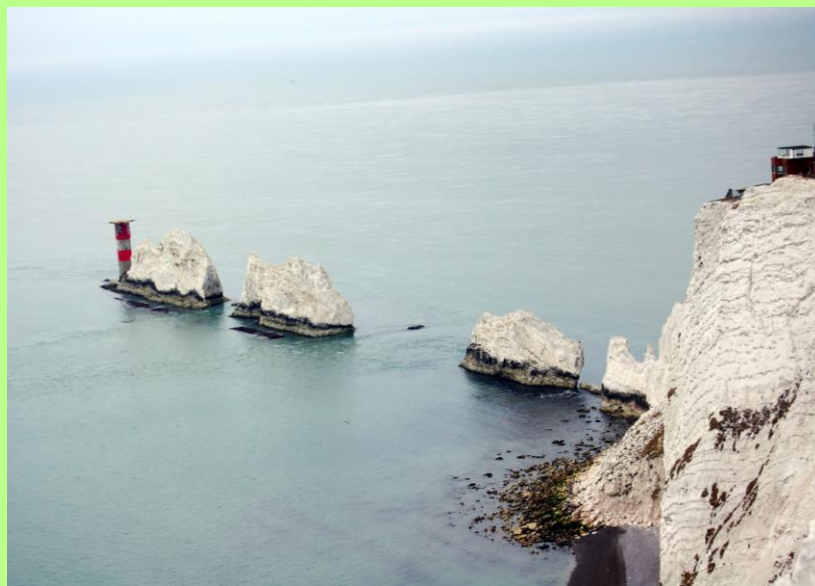
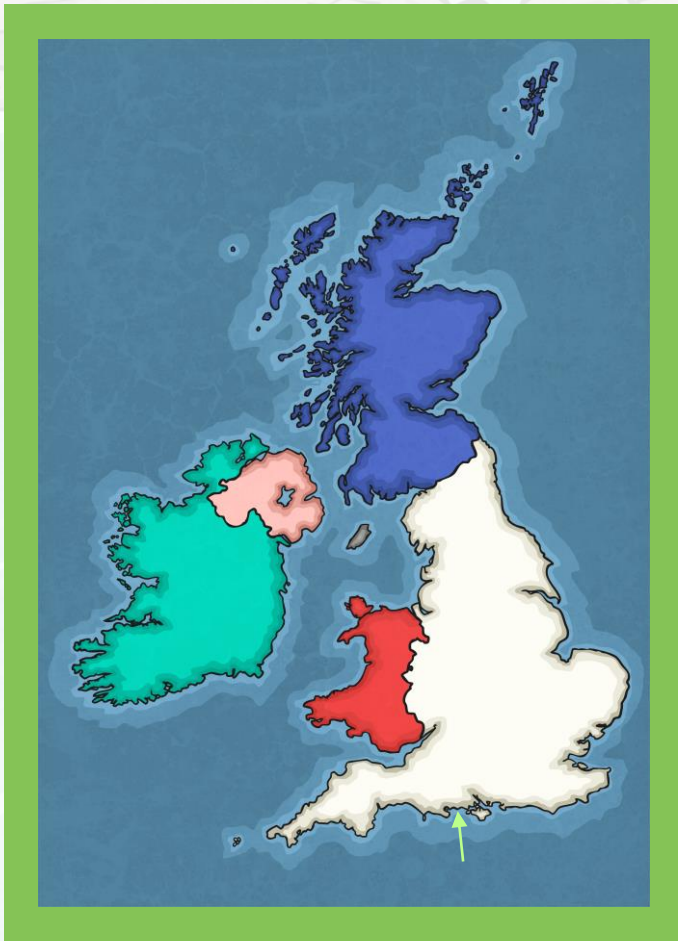


Photo courtesy of Marc Di Luzio (@flickr.com) - granted under creative commons licence - attribution

The UK Coast



Durdle Door (arch located in a bay), Dorset

- What features are shown?
- Where do you think they are found?
- Are they caused by erosion or deposition?



Photo courtesy of Montpellier (@flickr.com) - granted under creative commons licence - attribution