

# Suffixes for Superlative Adjectives

WEEK 10

Match the comparative with its root word.

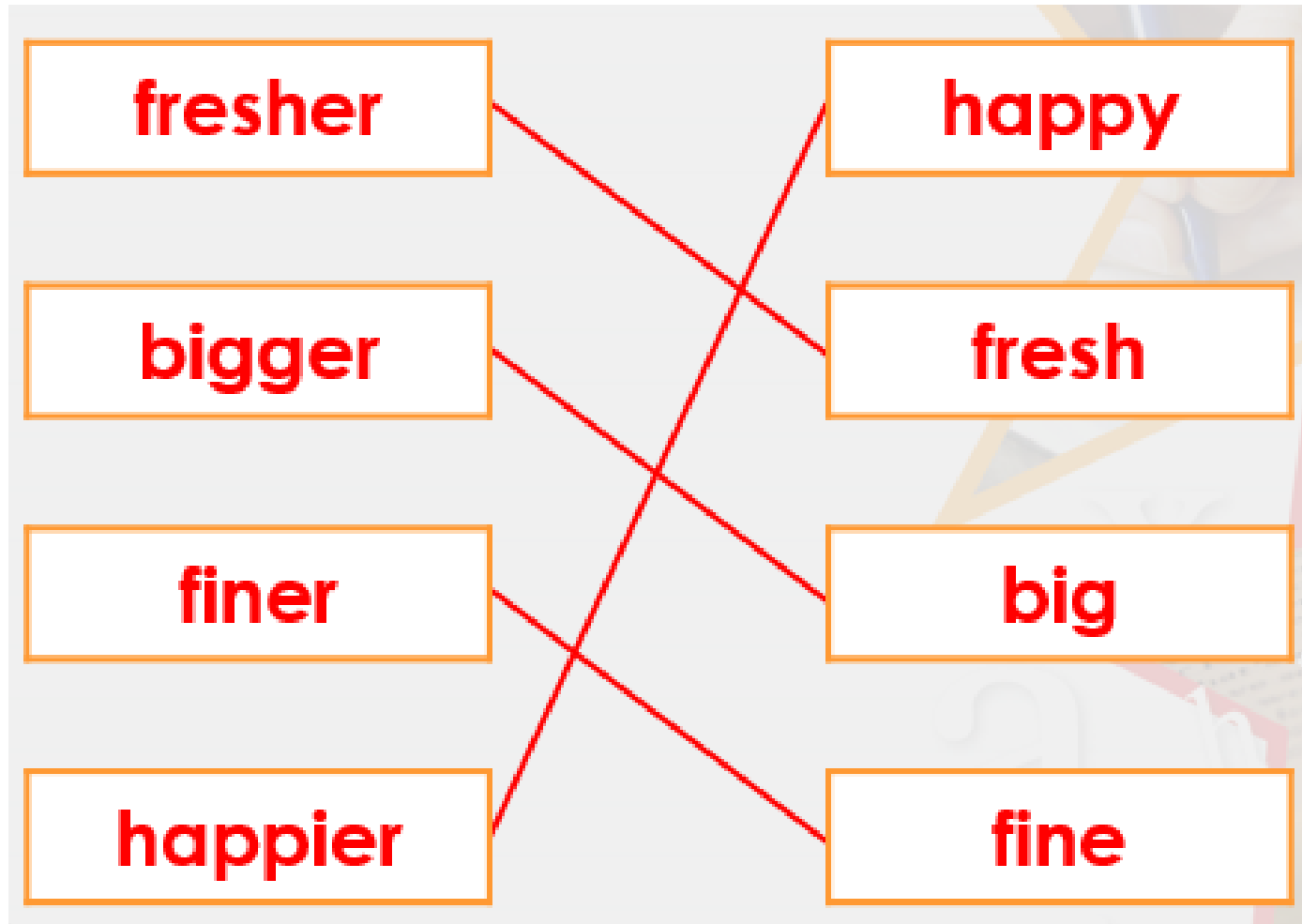
<b>fresher</b>	<b>happy</b>
<b>bigger</b>	<b>fresh</b>
<b>finer</b>	<b>big</b>
<b>happier</b>	<b>fine</b>

Root words

**REMEMBER**

The comparative form is used to compare two nouns (people, places, or things) or to describe verbs (actions), or other adverbs (words that describe verbs).

Answer..



# Join the root word to its superlative.

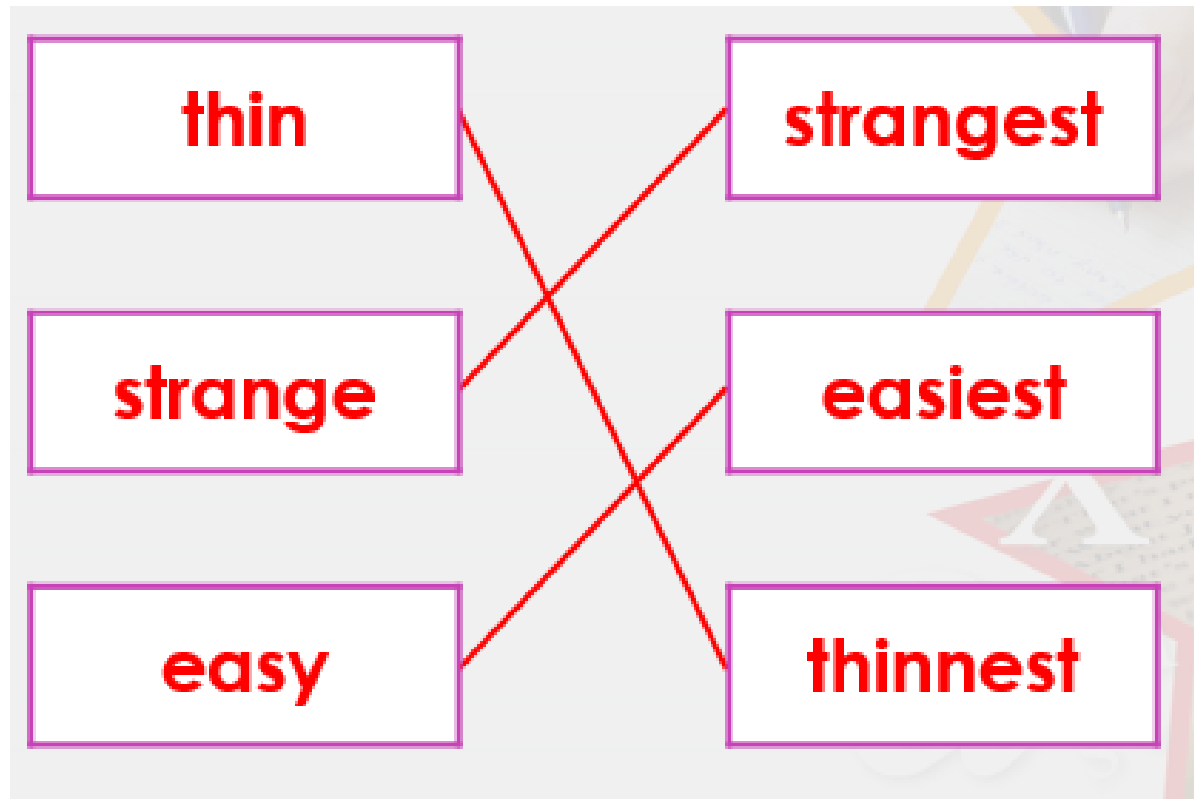
<b>thin</b>	<b>strangest</b>
<b>strange</b>	<b>easiest</b>
<b>easy</b>	<b>thinnest</b>

The superlative form indicates something that is the best of its kind, or something which surpasses all others. ... Superlatives are typically formed by adding the suffix '-est' to the end of the adjective or adverb that you are using to compare the items



# Answer...

Join the root word to its superlative.



Choose the correct spelling of the superlative.

**\* braveest**

**\* bravest**

Answer...

Choose the correct spelling of the superlative.

**\* braveest**

**\* bravest**

True or false? The superlative is used correctly in the sentence below.

Jack is the most oldest child in the class.

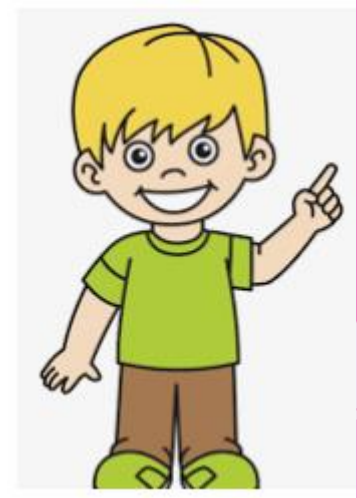




# Answer...

True or false? The superlative is used correctly in the sentence below.

Jack is the most oldest child in the class.



**False**

The word 'most' is not needed before the superlative.

Complete the table by correctly adding the ‘-est’ suffix to the root words.

root word	superlative
late	
lucky	
thin	
weak	

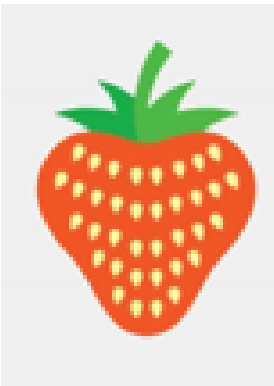
Answer...

root word	superlative
late	<b>latest</b>
lucky	<b>luckiest</b>
thin	<b>thinnest</b>
weak	<b>weakest</b>

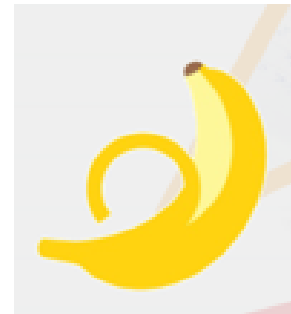
# Application

Use the images to create a sentence using the superlatives below:

**sweetest**



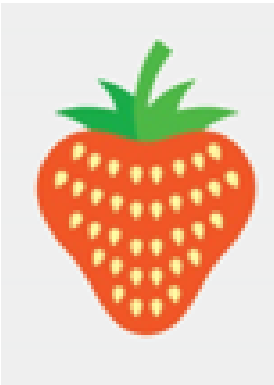
**softest**



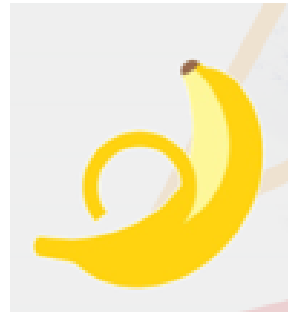
# Answer...

Use the images to create a sentence using the superlatives below:

**sweetest**



**softest**



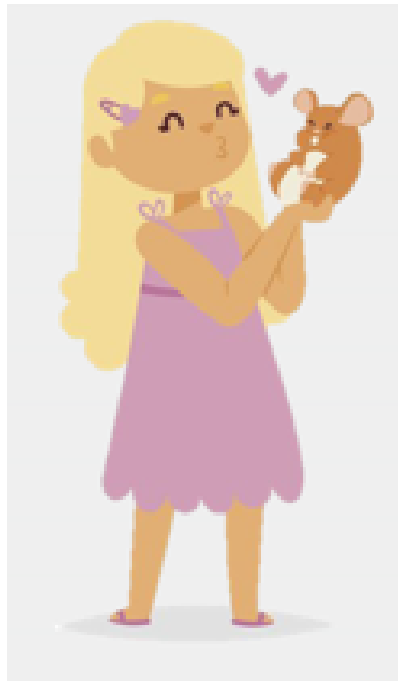
Various answers, for example:

Mum made me a lovely smoothie using the sweetest strawberries and the softest bananas.

# Application

Use the image to add a superlative to the sentence below.

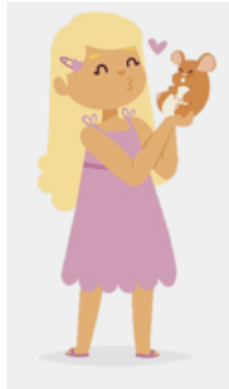
Amy has the \_\_\_\_\_ pet.



# Answer...

Use the image to add a superlative to the sentence below.

Amy has the \_\_\_\_\_ pet.



Various possible answers, for example:

Amy has the cutest pet.

# Reasoning

Mark Maisie's spelling test. Explain any mistakes she has made.

1. palest

2. cheekiest

3. flattest

4. greedyest



# Answer...

Mark Maisie's spelling test. Explain any mistakes she has made.

1. palest	✓
2. cheekiest	✓
3. flattest	✓
4. <u>greedyest</u>	X

‘Greedyest’ is incorrect because the ‘y’ at the end of greedy should be changed to an ‘i’ before ‘est’ is added.