

21.3.22



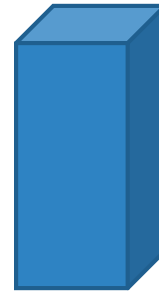
Mass

Compare mass

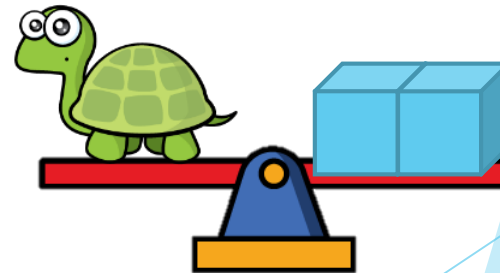
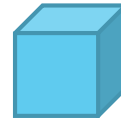
1) How do you spell 14?

2) What number comes next? 31, 30 ____

3) What is this shape called?



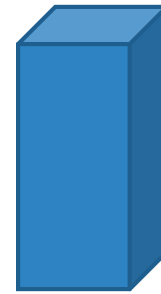
4) Tiny has a mass of ____



1) How do you spell 14? fourteen

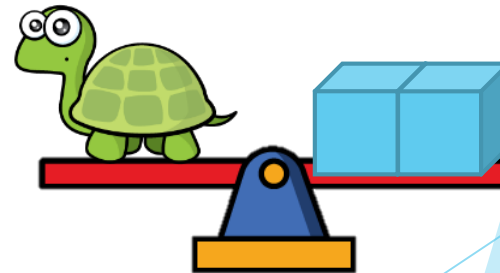
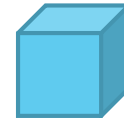
2) What number comes next? 31, 30 29

3) What is this shape called?

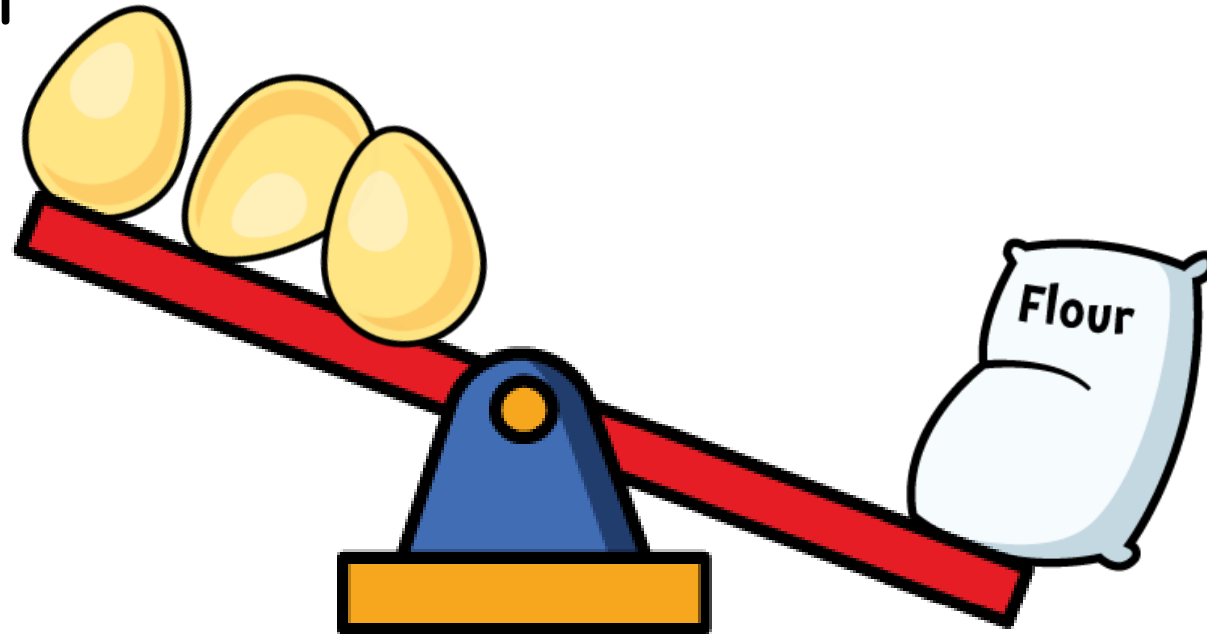


cuboid

4) Tiny has a mass of 2



Lighter

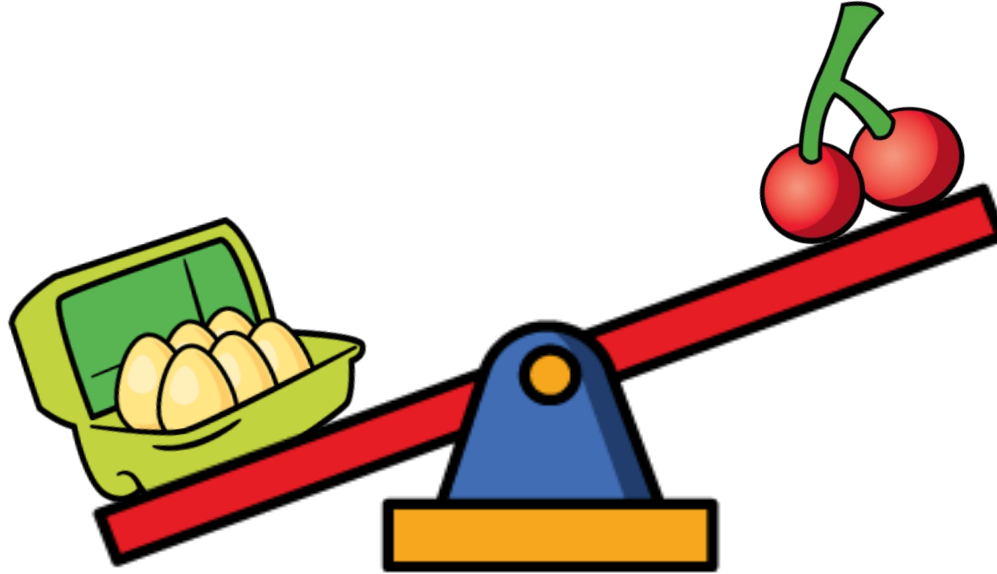


Heavier

Lighter or heavier



What do
you notice?

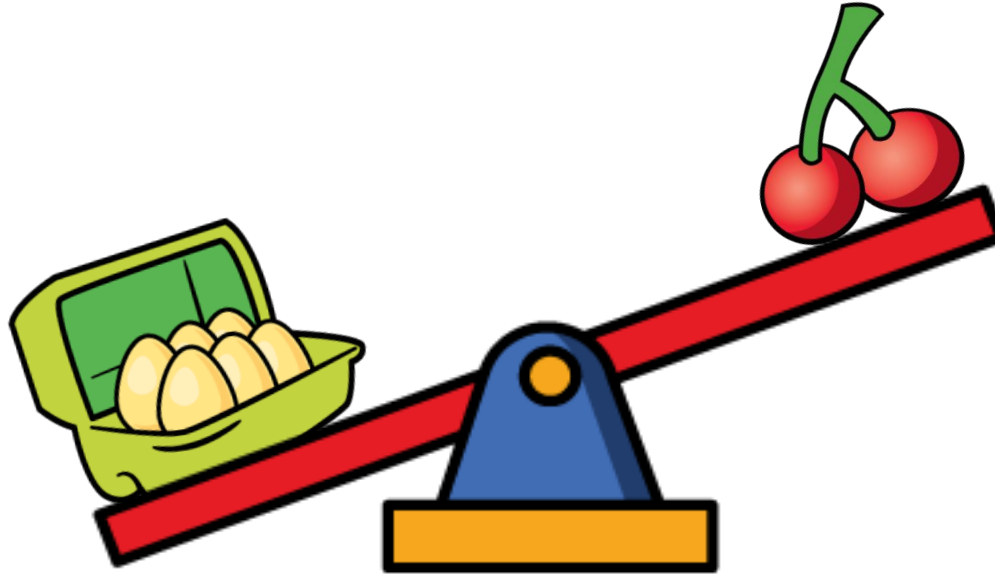


The eggs are than the
cherries.

Lighter or heavier



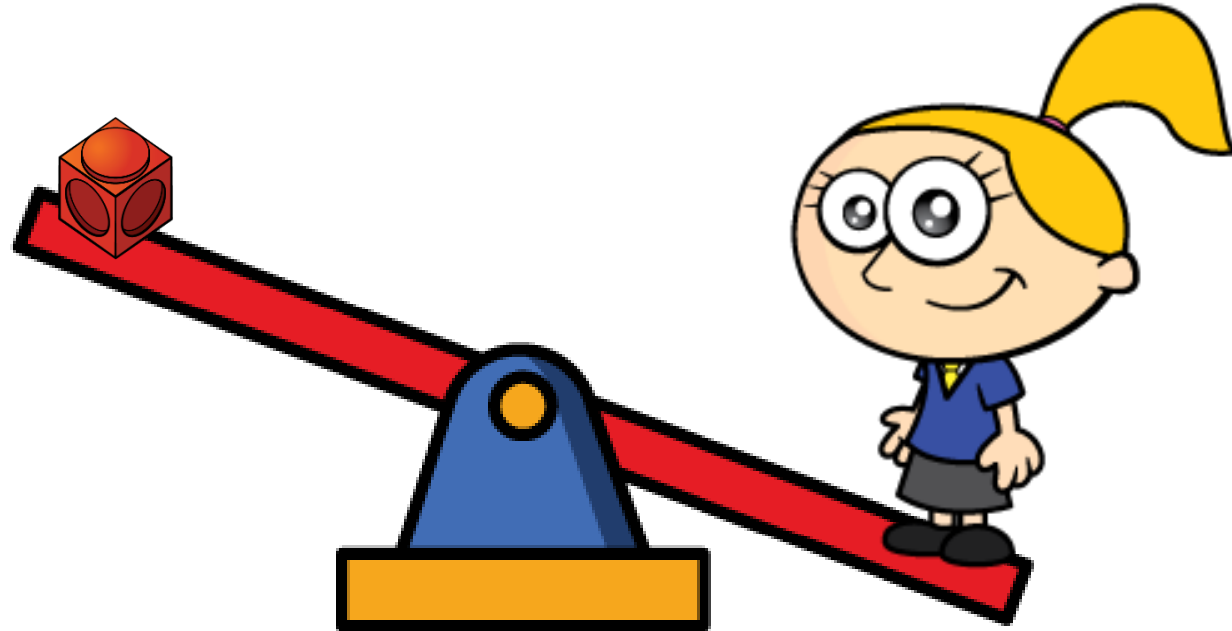
Have a
think



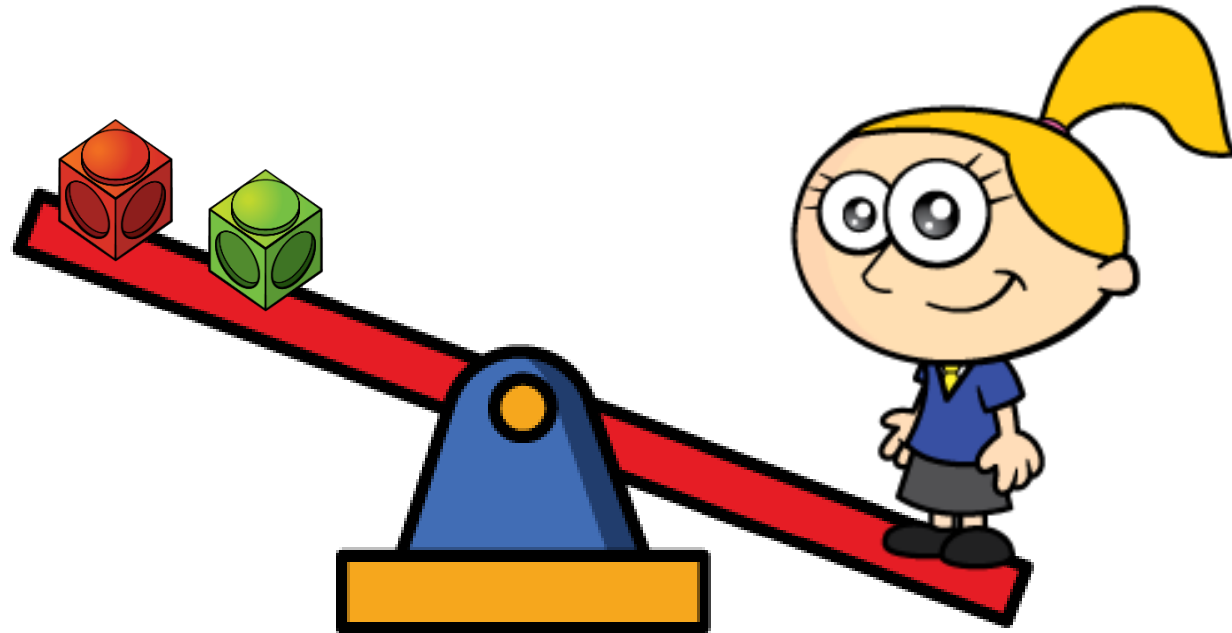
The cherries are than
the eggs.

How many cubes?

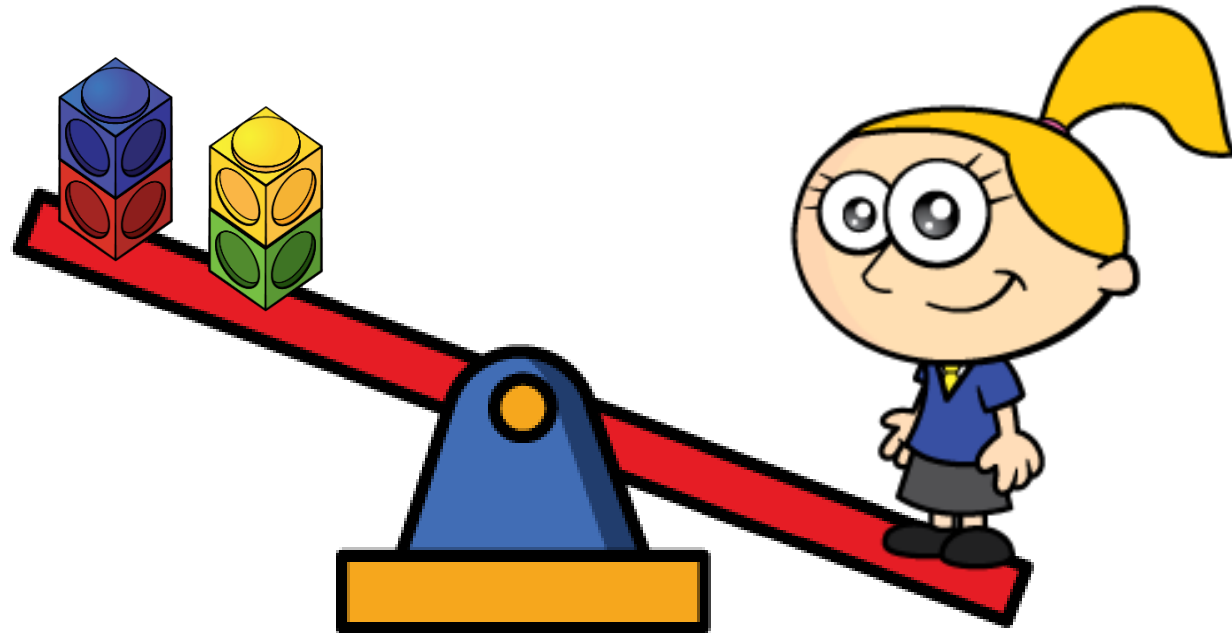
Have a
think



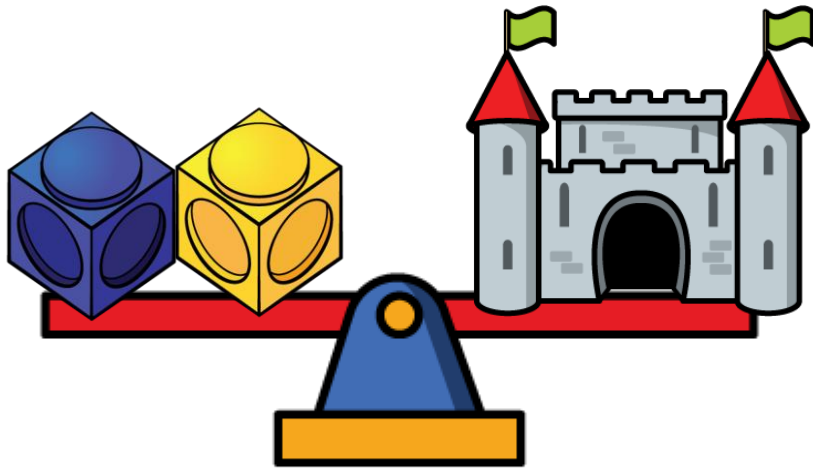
Eva is than 1 cube.



Eva is heavier than 2 cubes.



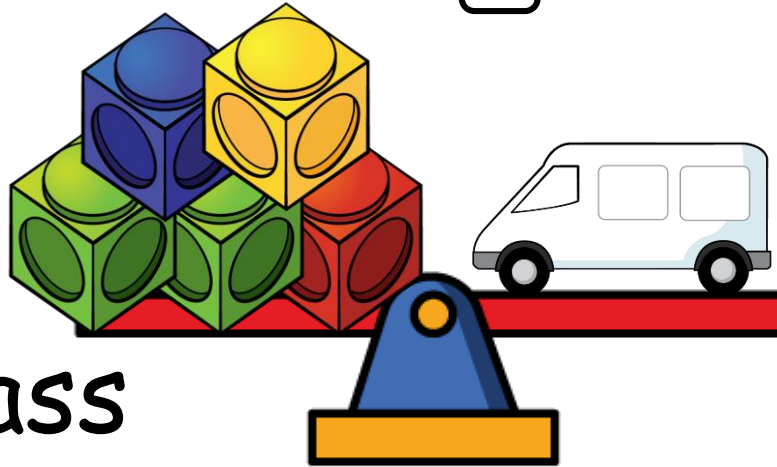
Eva is heavier than 4 cubes.



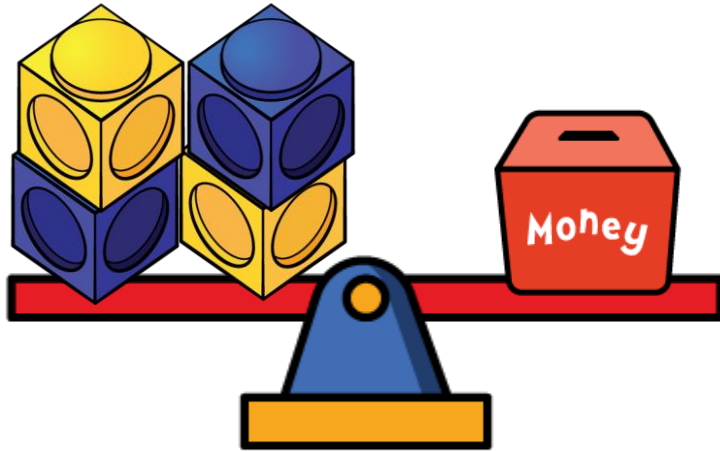
Have a think 



The castle's mass is cubes.



The van's mass is cubes.

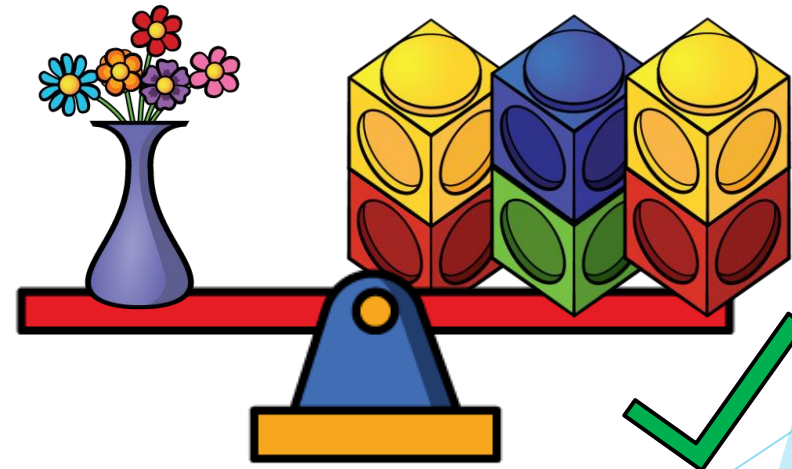


Have a
think

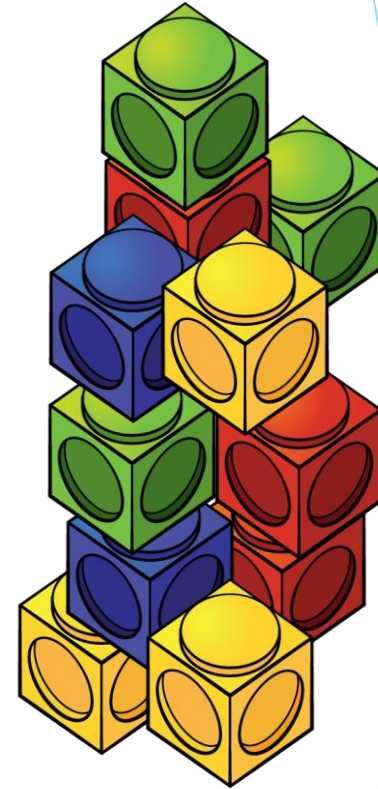
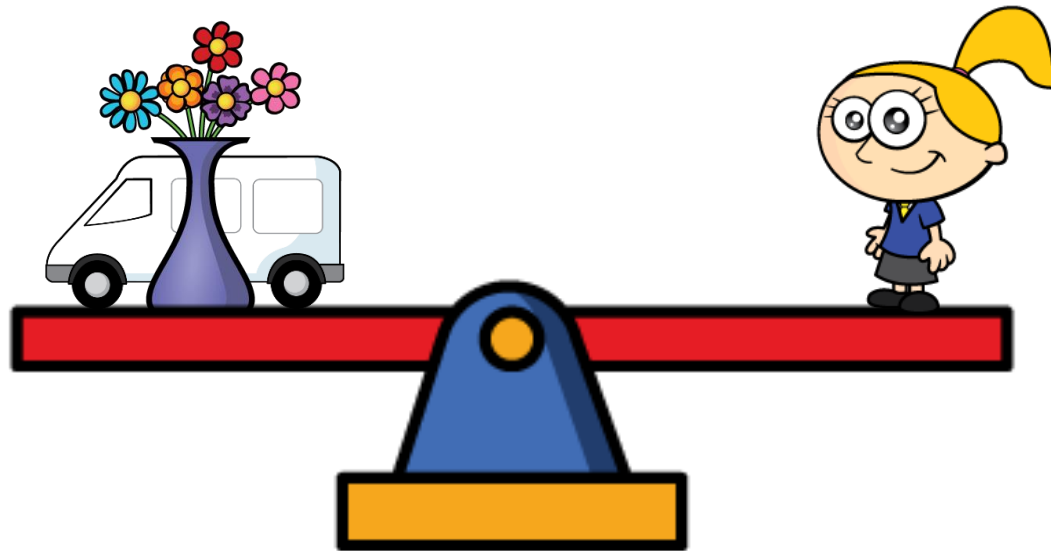


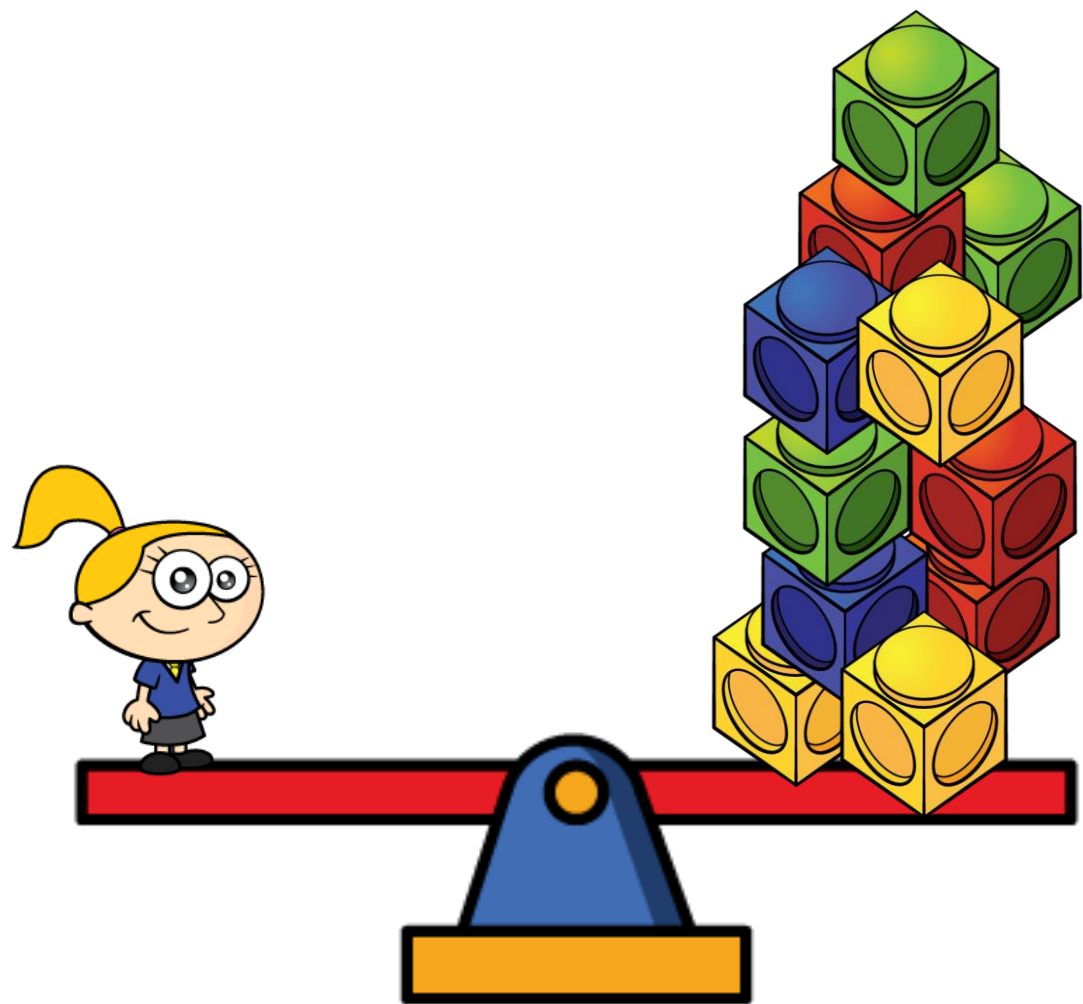
The money box's mass is cubes.

The vase's mass
is cubes.

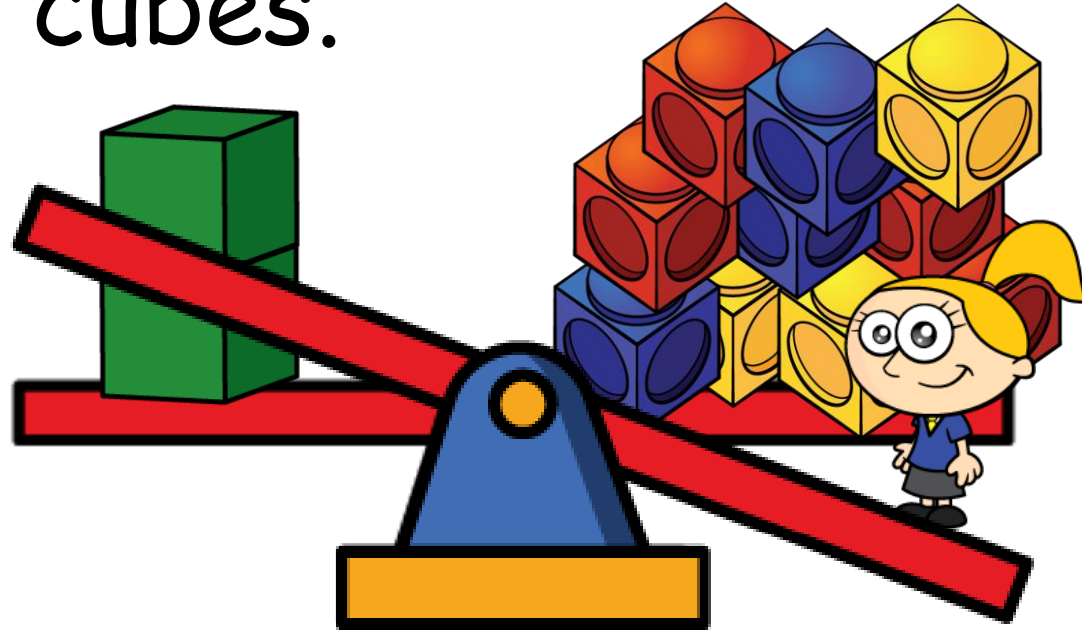


The van and vase together have the same mass as Eva.



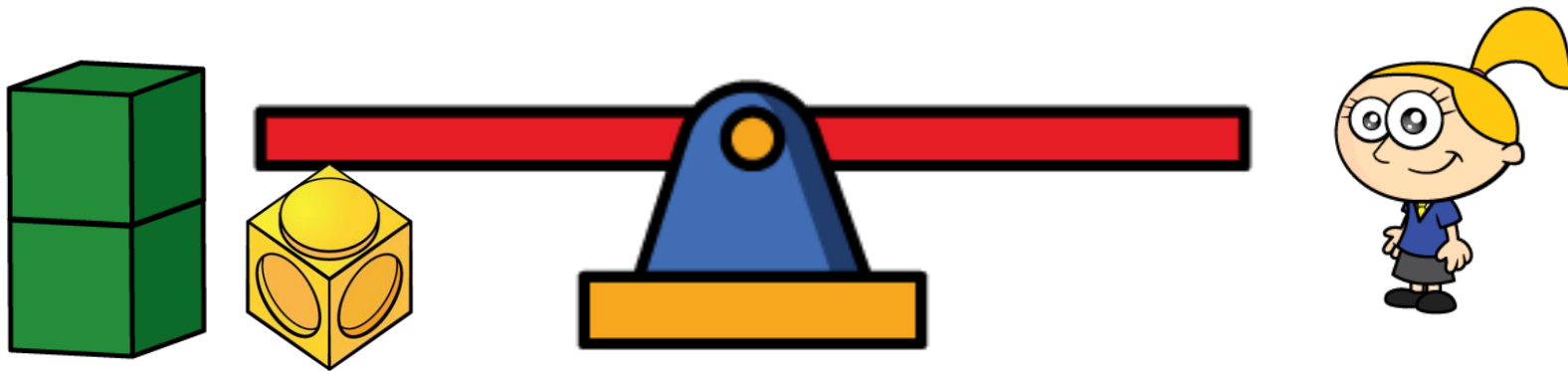


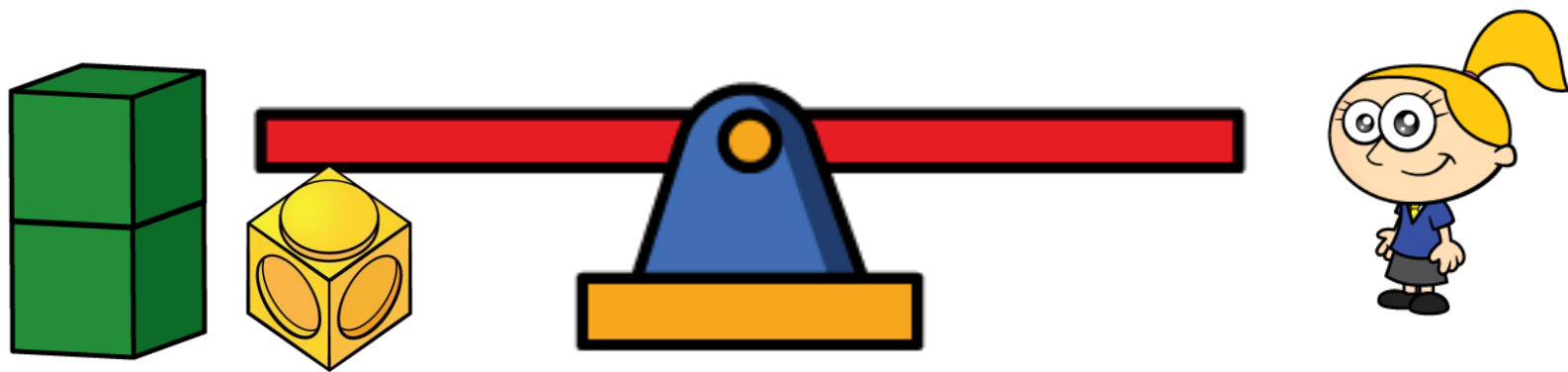
1 green block has the same mass as 5 cubes.



2 green blocks have the same mass as cubes.

Have a think





22.3.22



Mass

Measure mass in grams

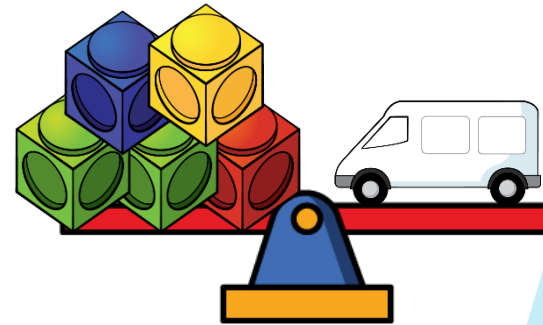
1) How do you spell 15 ?

2) What number comes next? 22, 23, __

3) What is this called?



4) The van's mass is __ cubes



1) How do you spell 15 ? fifteen

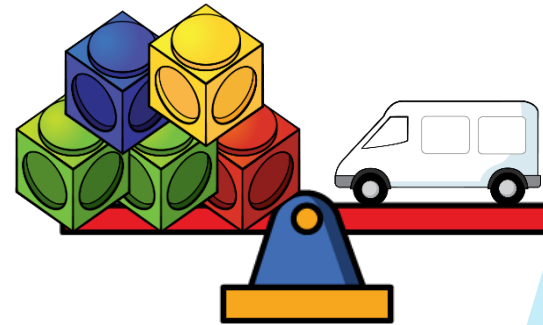
2) What number comes next? 22, 23, 24

3) What is this called?



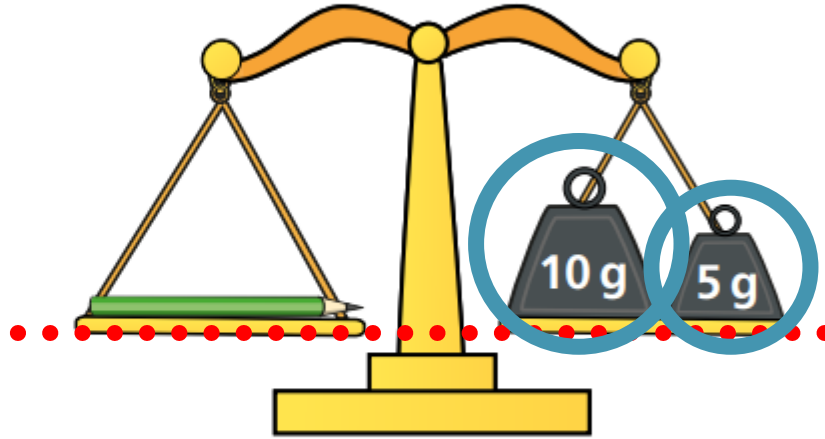
triangle

4) The van's mass is 5 cubes



1 What is the mass of each object?

a)



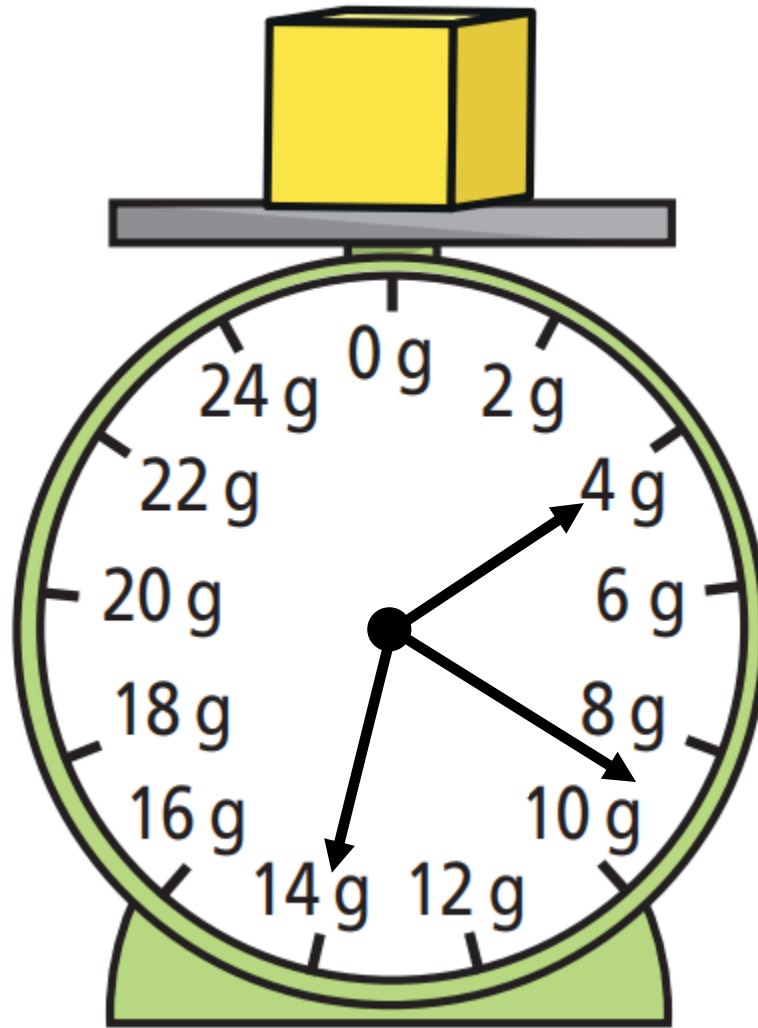
The pencil has a mass of

15

g.



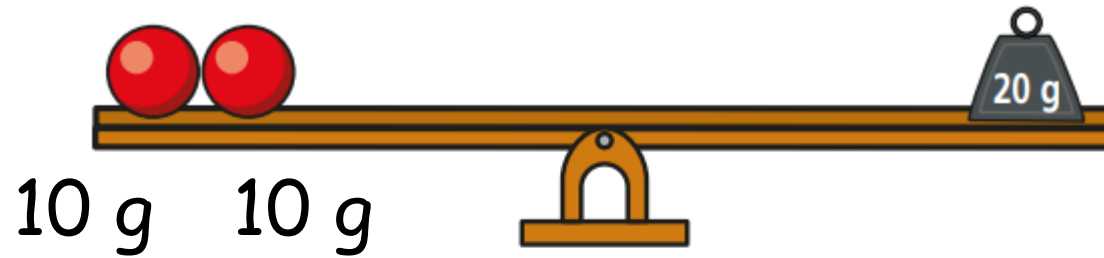
Have a think




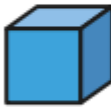
~~14~~


g

6 Work out the mass of each 3D shape.



 = g

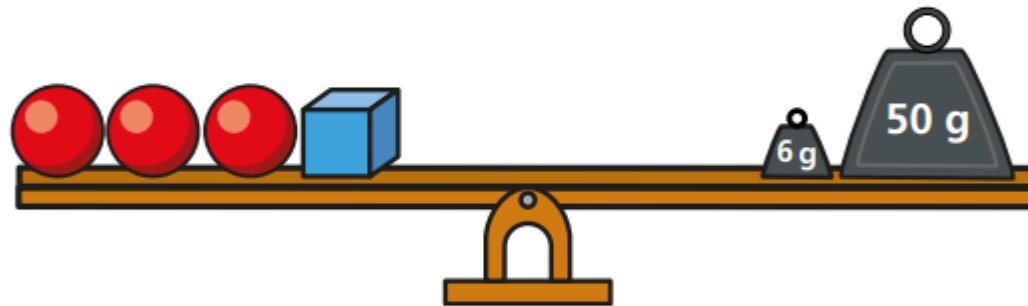
 = g

 = g

Have a think

6 Work out the mass of each 3D shape.

$$10 + 10 + 30 + \underline{26} = 56$$



Have a think



$$= \boxed{10} \text{ g}$$

26